

TWSE:5284 jpp-KY

JINPAO

經寶精密(控股)股份有限公司



工廠外觀



衛星圖



人數約 1150 人

資本額 NTD 4.79億

現有廠地面積 88,525 m²

現有廠房面積 54,187 m²

航太區-CNC加工



航太區-雷射加工



航太區-人工處理



航太區-維修改裝件



航太區-液壓成型



航太區-液壓成型件



航太區-表面處理

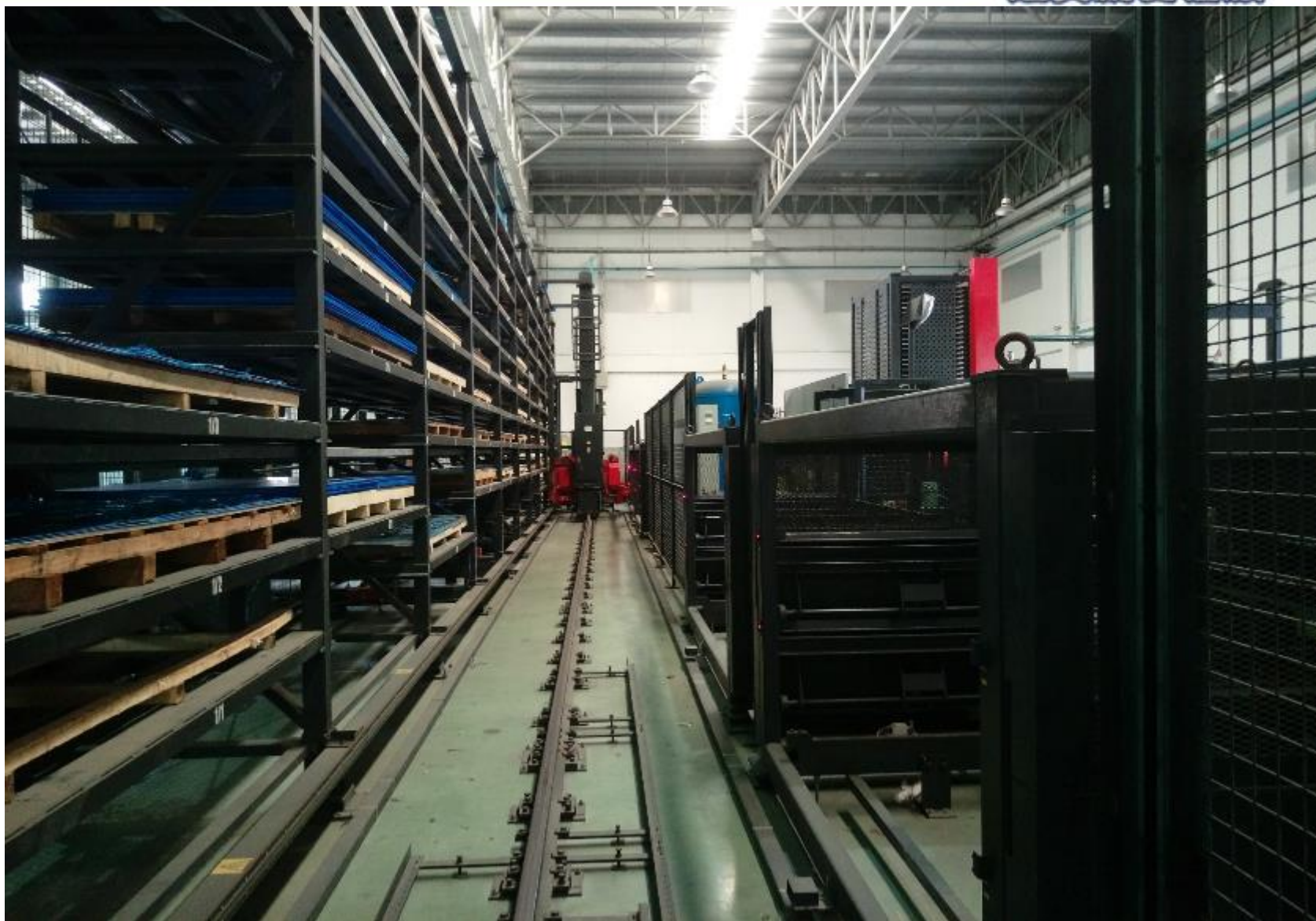


夢幻工廠-自動換刀



夢幻工廠-大型倉儲

JINP40
JPP Holding Co., Ltd.
經實精密控股



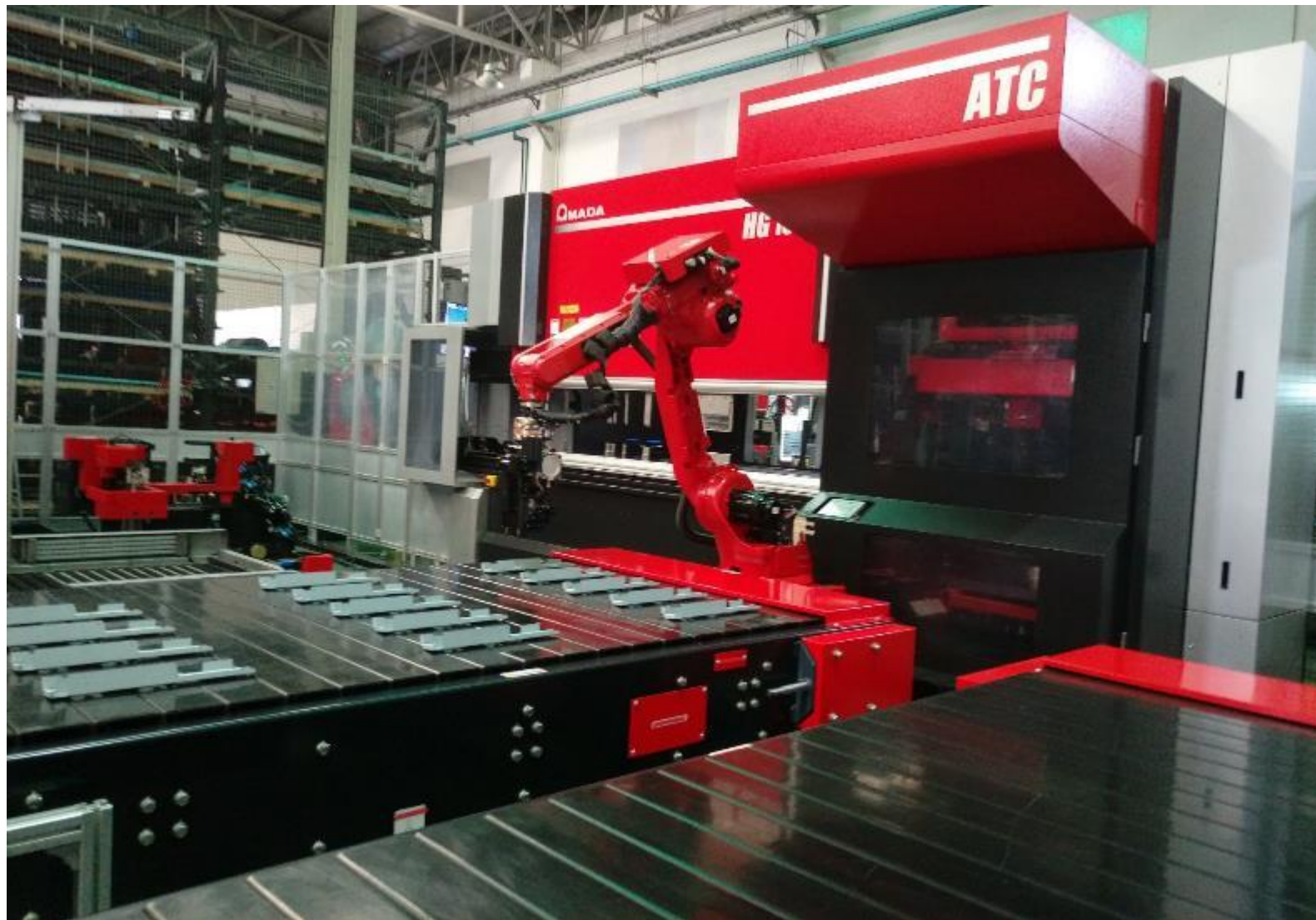
夢幻工廠-自動下料



傳統方式下料



夢幻工廠-自動折彎



衛星圖



人數約 1150 人

資本額 NTD 4.79億

現有廠地面積 88,525 m²

現有廠房面積 54,187 m²

非航太區-模具



非航太區-CNC加工



非航太區-人工作業



非航太區-雷射、沖孔、折床



非航太區-自動沖壓



非航太區-人工焊接



非航太區-自動組裝



衛星圖



人數約 1150 人

資本額 NTD 4.79億

現有廠地面積 88,525 m²

現有廠房面積 54,187 m²

第三廠區-自動噴漆



第三廠區-人工噴漆



第三廠區-人工處理



第三廠區-人工處理



第三廠區-組裝



第三廠區-組裝



第三廠區-組裝



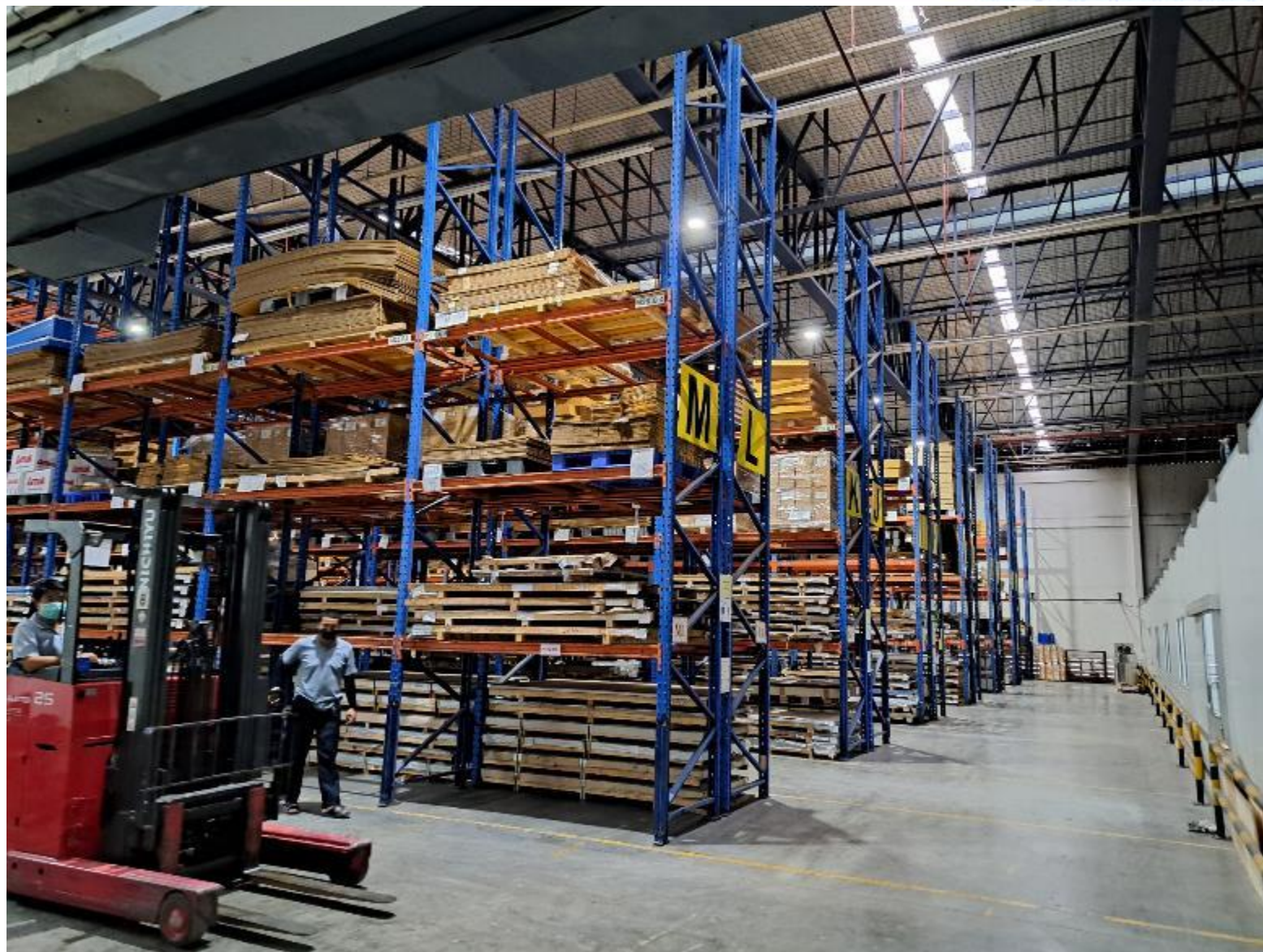
第三廠區-自動檢測



第三廠區-機器人搬運



第三廠區-倉儲



第三廠區-出貨



衛星圖



人數約 1150 人

資本額 NTD 4.79億

現有廠地面積 88,525 m²

現有廠房面積 54,187 m²

新蓋廠房



新蓋電焊、研磨廠

JINPAO
JPP Holding Co., Ltd.
經實精密控股



未來規劃

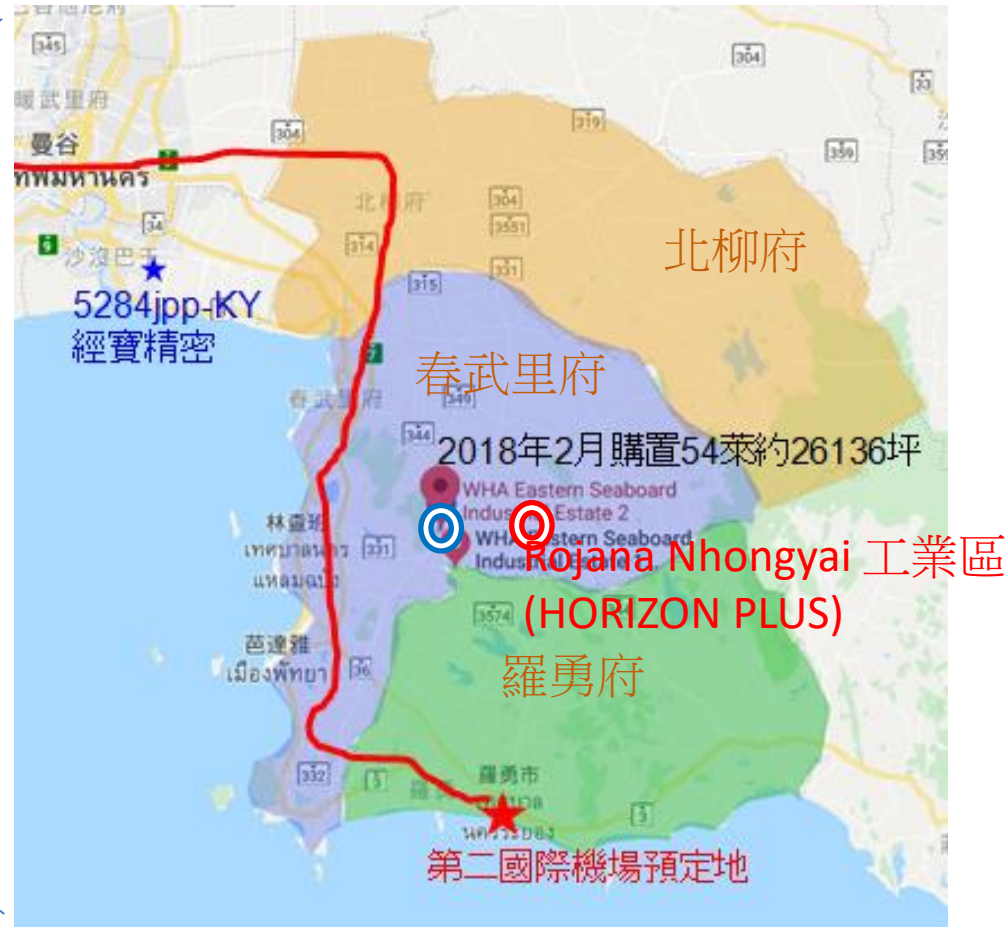


地理位置



新購置土地位置

泰國EEC經濟特區
-鄰近國際空港/海港與曼谷市區,運輸便利四通八達





新購置土地位置



生產基地

全球化供應鏈服務

AGiLiTEAM
BY JINPAO

SPEM (France)



2020年初

LUTEC (France)



2018年底

ADB (France)

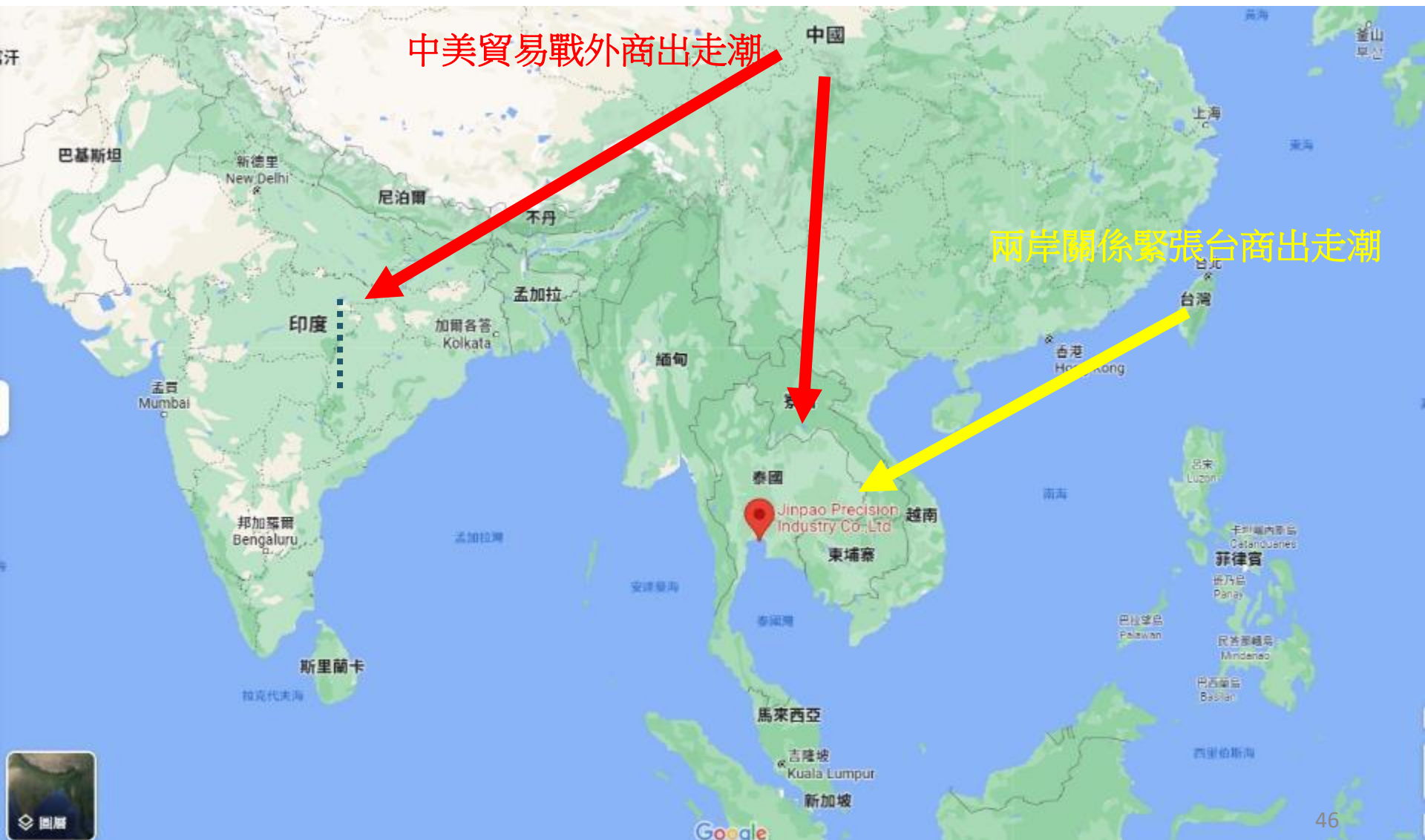


JINPAO



競爭優勢

地理優勢

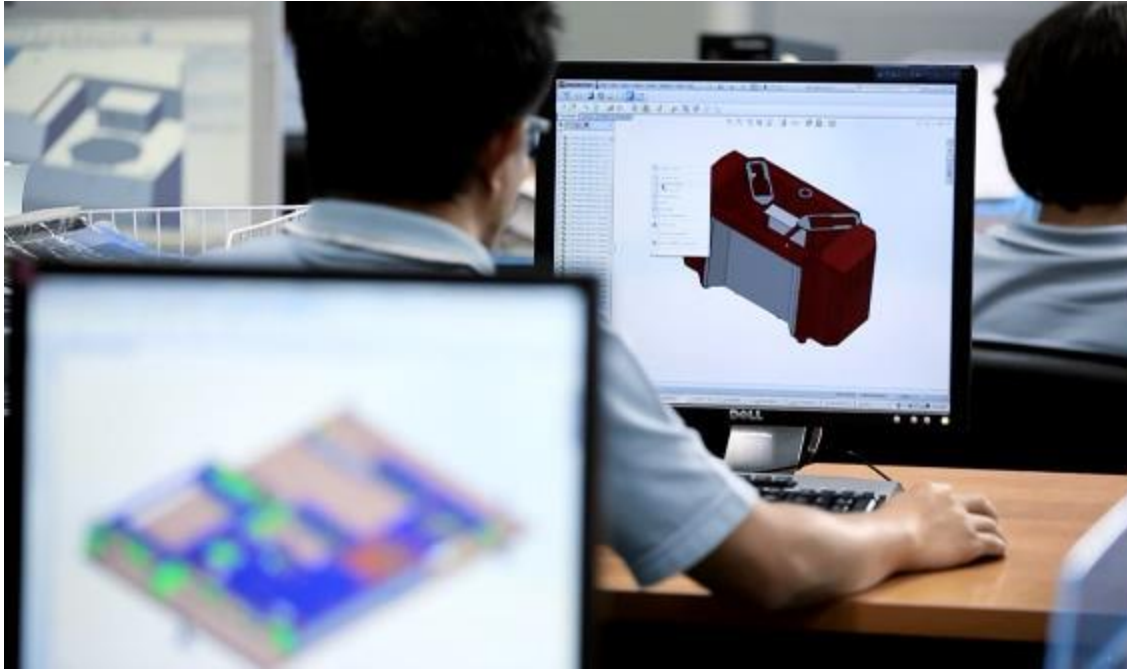


中美貿易戰外商出走潮

兩岸關係緊張台商出走潮

研發優勢

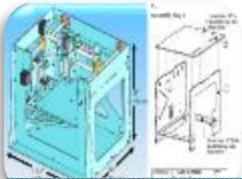
國際化團隊 - 降低與客戶間溝通上的隔閡



自主的研發能力
提供客戶ODM或OEM的雙重選擇



彈性及一站式的解決方案(品質保證)



- 結構設計
- 3D 建模
- 2D 繪圖



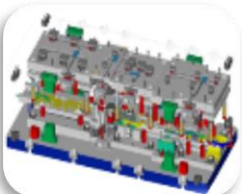
- 嵌套
- 雷射切割
- 沖孔



- 折彎

多樣少量客製化 (電腦沖床生產)

大量 (開模生產)



- 硬體設計
- 3D Modeling
- 2D Drawing



- 模具製造



- 沖壓

以最先進的工藝技術為客戶提供從代客研發設計到製造的一站式解決方案(全製程)



- Welding
- Spot Welding



- Chromating



- Powder and Liquid Painting
- Silk Screen



- Assembly

品質優勢 航太工藝技術

亞洲先進的鋁熔接技術

2016年取得泰國第一張美國航太Nadcap-Welding認證

目前有Nadcap非破壞性試驗、化學皮膜、電焊、熱處理、陽極處理等製程認證

Robot Welding
(Before)



Laser Welding
(After)



系統優勢快速反應能力

客製化的瓶頸在於少量生產時各部門間配合
本公司透過無紙化及大數據應用，加強系統整合
達到不同製程間快速反應能力



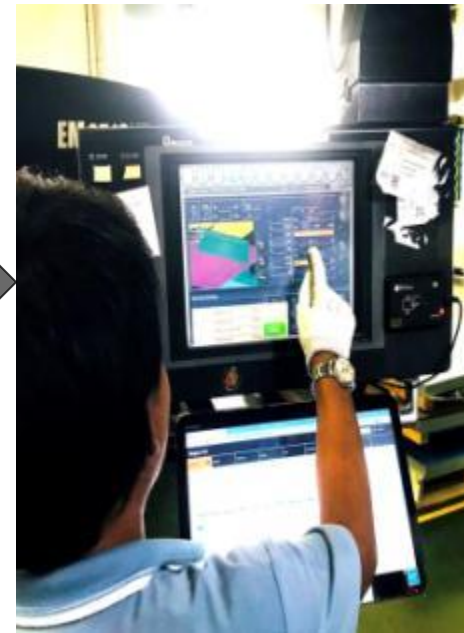
文件數位化



製造執行系統



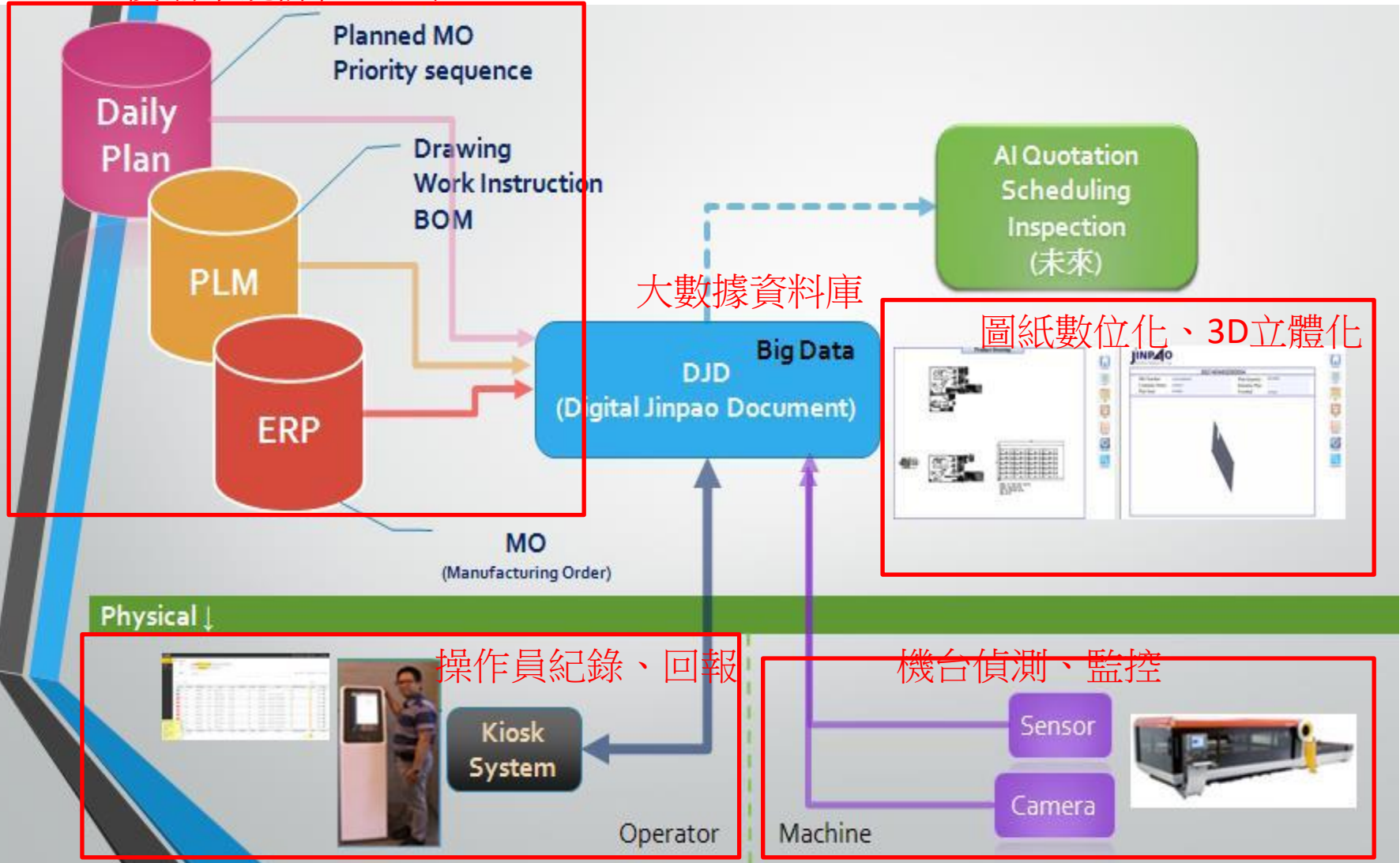
工站執行監控



作業執行管理

系統優勢 大數據應用

後端系統排程、整合





產品綫

產品綫



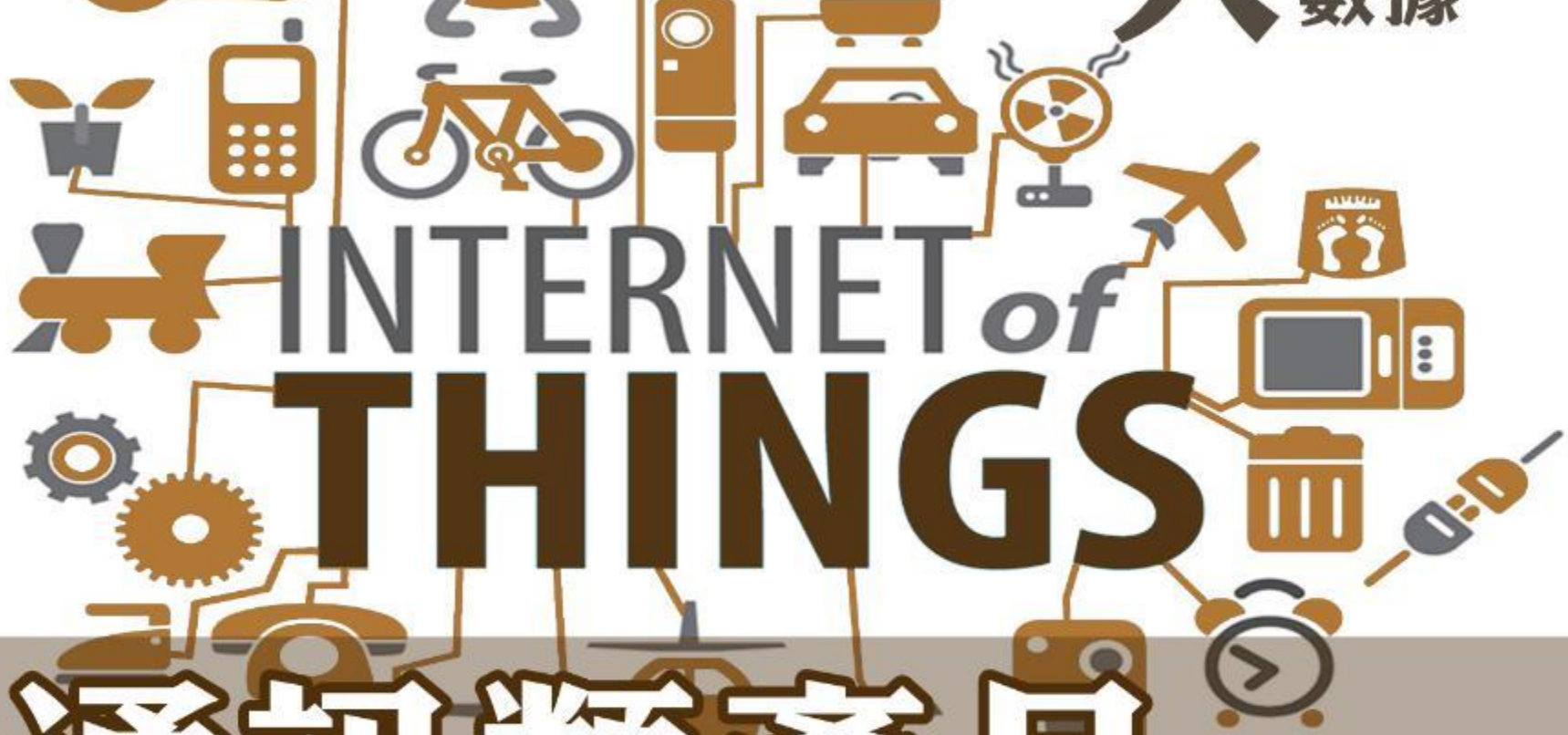
通訊 電子

航太 其他

5G 4G

無人商店

大數據



通訊類產品 物聯網

通訊類產品-抱桿櫃、基地台



tion
(OH)

Splice Case

Distribution
Cable

Access
Terminal

Splice Case



ONT

Drop
Cable

通訊類產品-通訊櫃

泰國四大電信商認證



通訊類產品-數位增值機



通訊類產品-自動販賣機

客製化自動販賣系統

整合
第三方支付



通訊類產品-伺服器類產品

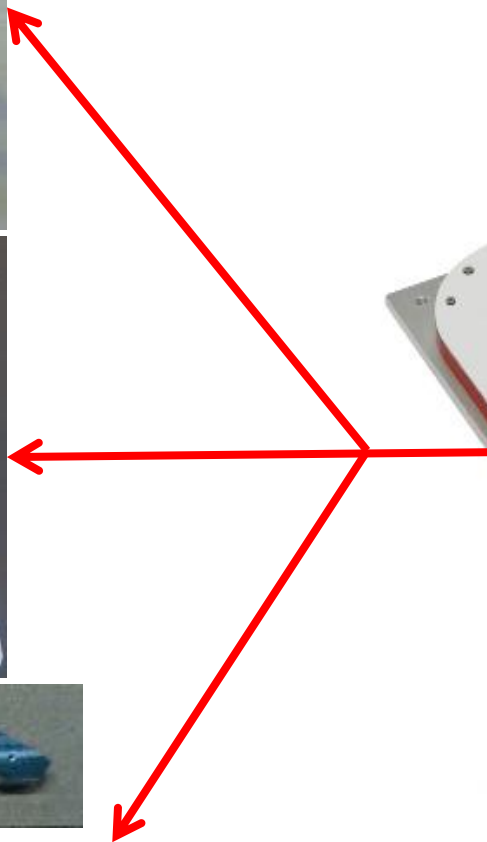
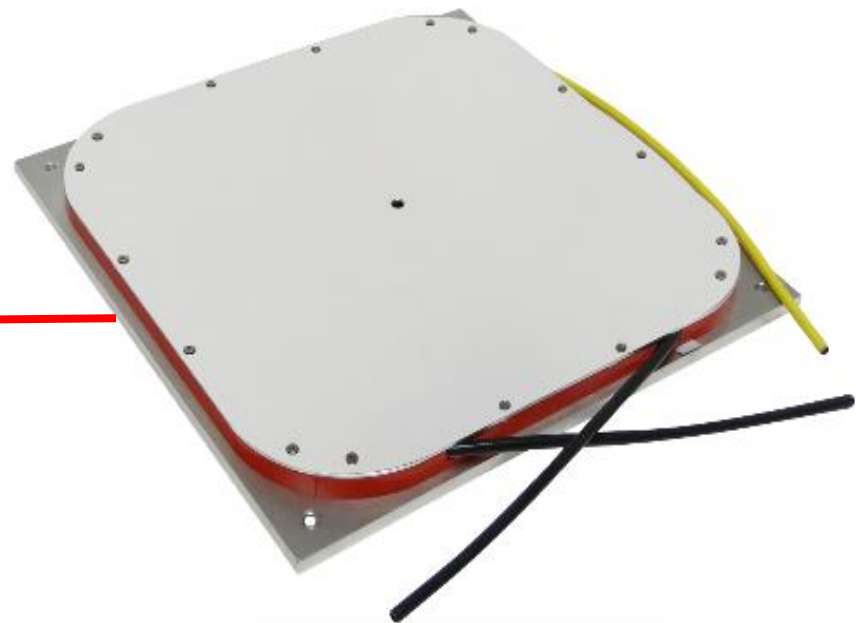
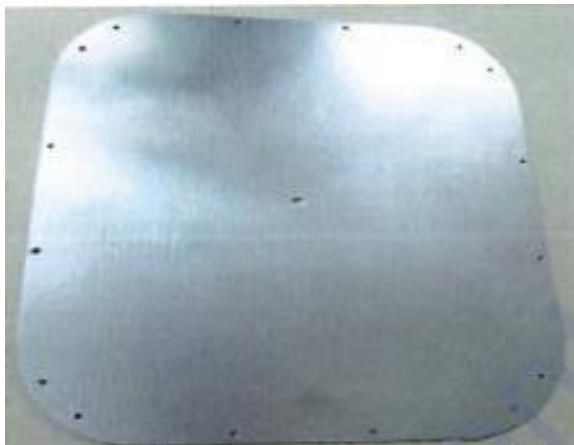
An advertisement for IP-3000 Enterprise PBX. It features a large server rack on the left and a smaller server rack in the foreground. The background is a blue globe with a grid pattern. The text "IP-3000 Enterprise PBX" is prominently displayed. The FORTH logo is at the bottom right, with the tagline "BUSINESS COMMUNICATION SYSTEM".

IP-3000
Enterprise PBX

FORTH
BUSINESS COMMUNICATION SYSTEM



通訊類產品-光纖通訊零組件



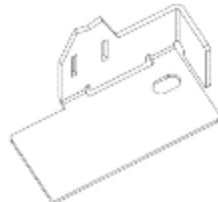
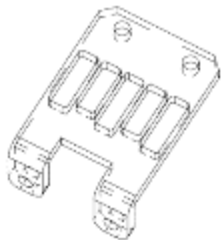
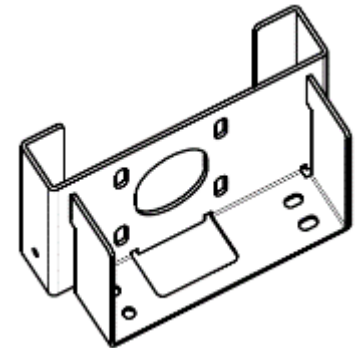
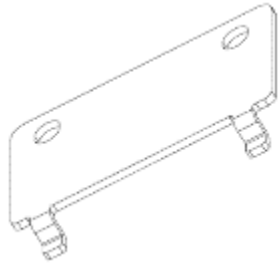
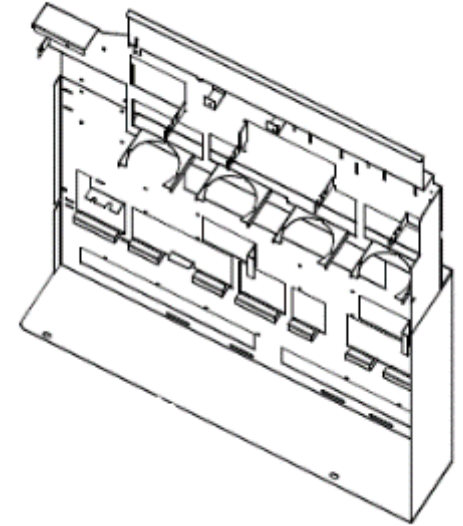
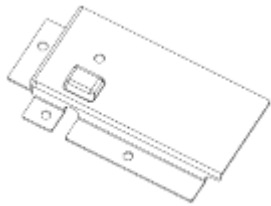
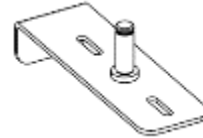
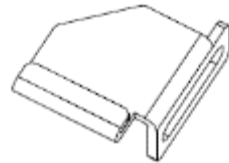
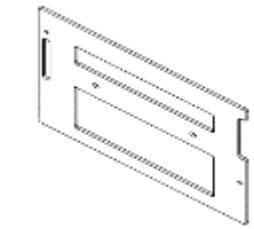
通訊類產品-衛星通訊設備



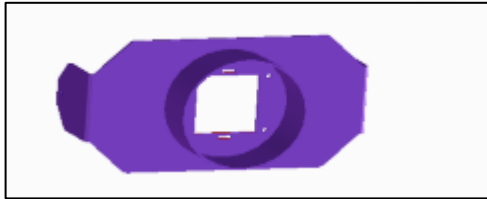
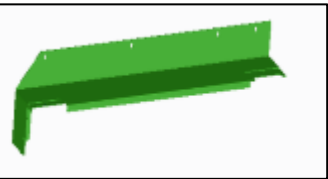
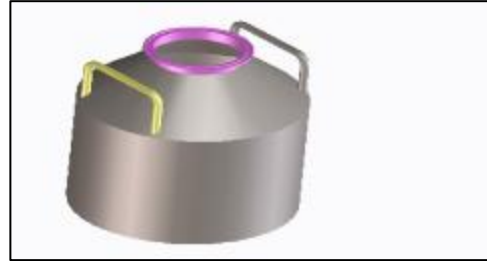
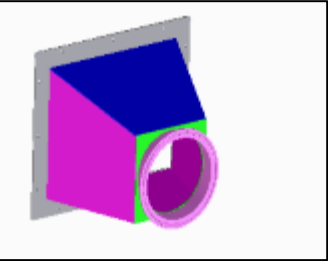
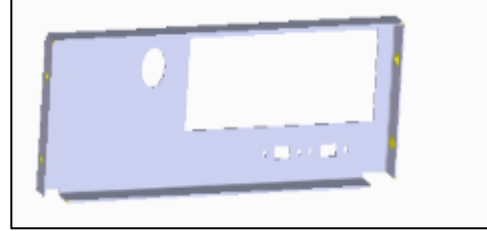
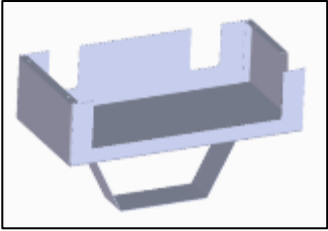
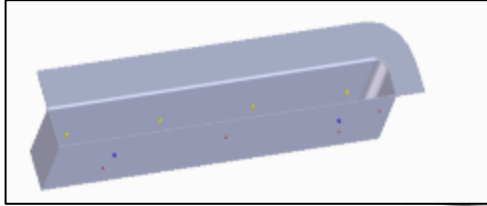


電子類產品

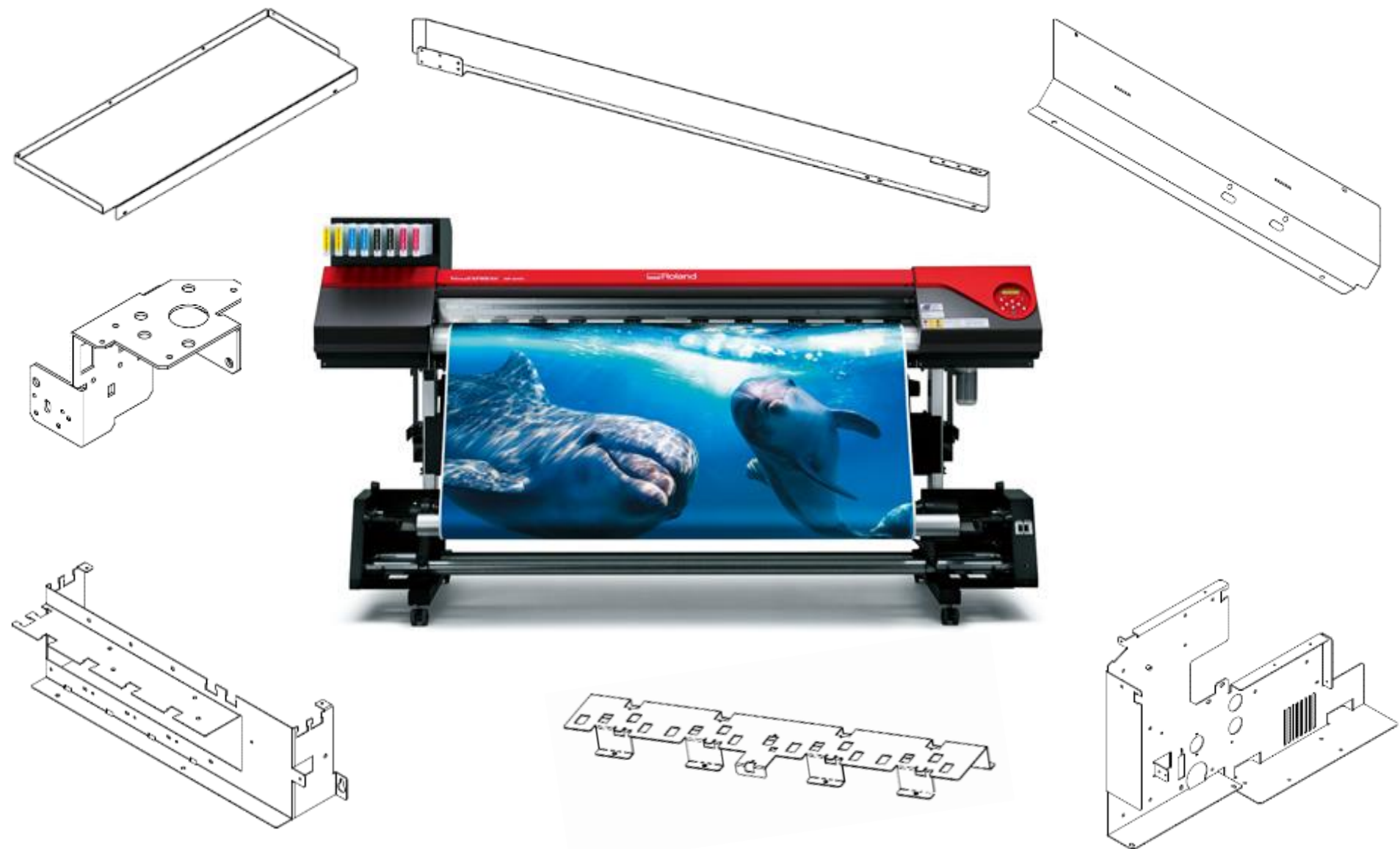
電子類-家用3D印表機零組件



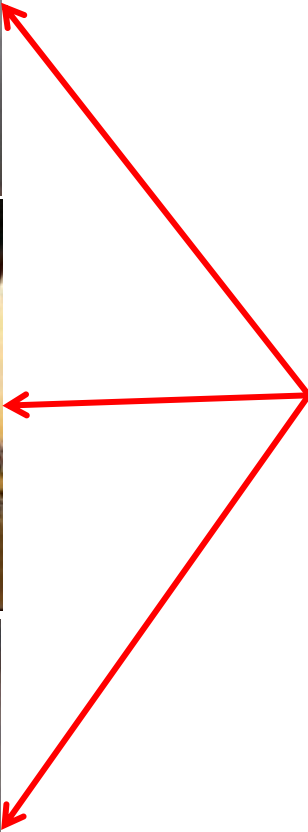
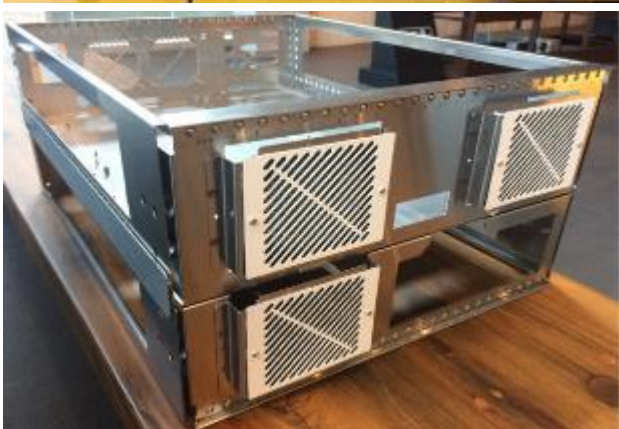
電子類-商用3D印表機零組件



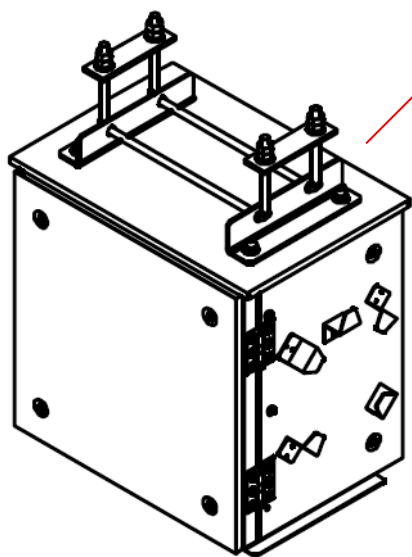
電子類-工業用印表機零組件



電子類-光纖雷射加工設備



電子類-抱桿櫃



柱上開閉器子装置

電子類-遊戲機





航太類產品

OUR AEROSPACE PROGRAM



A320



EC225



A340



G650



A350



C919



787



A400M

駕駛艙航電機構件



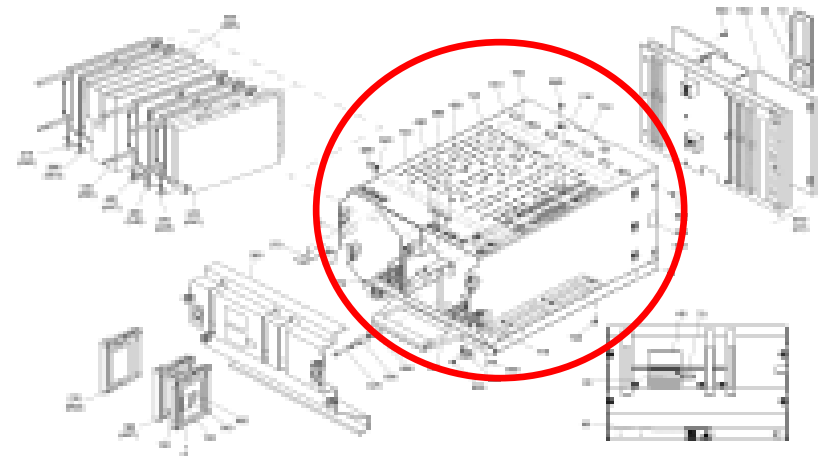
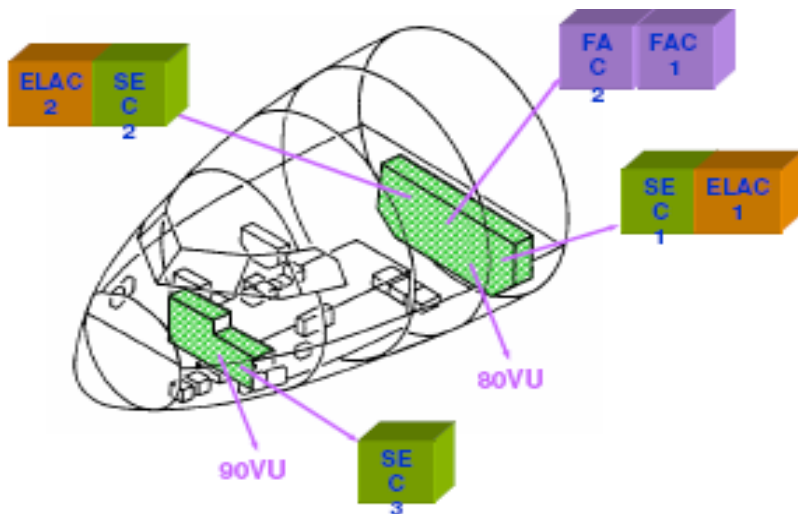
Aerospace Products





Aerospace Products

Electrical Flight Control System Computers Enclosures



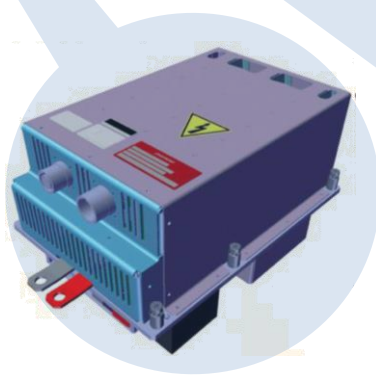
駕駛艙航電機構件



Totally JINPAO
produce 56 different
part numbers for
A350



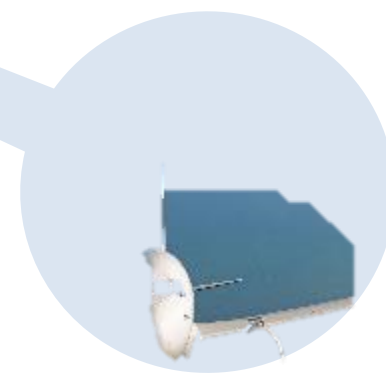
Transformer
Rectifier Unit



Regulated
Transformer
Rectifier Unit

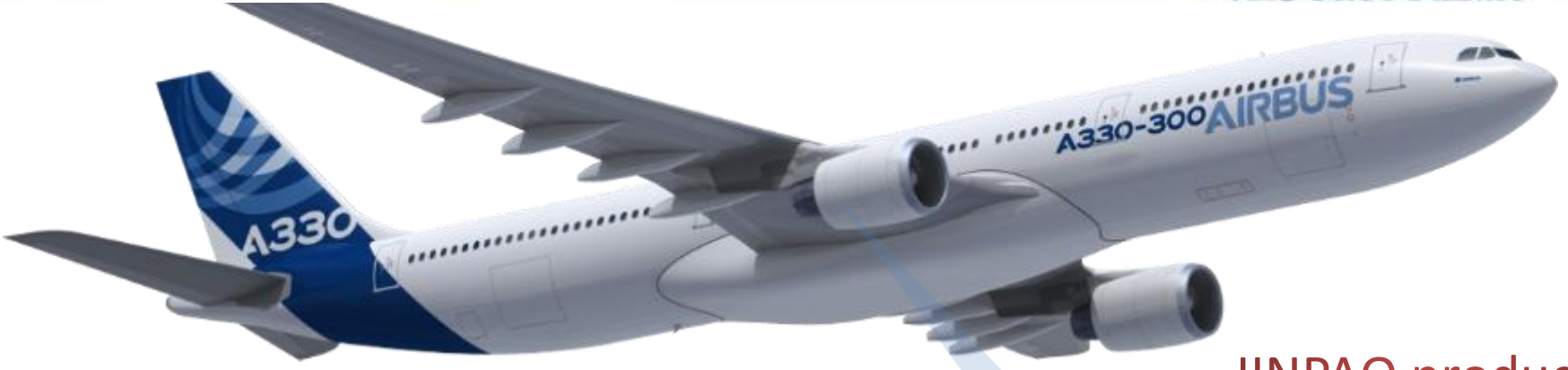


Auto
Transformer
Unit

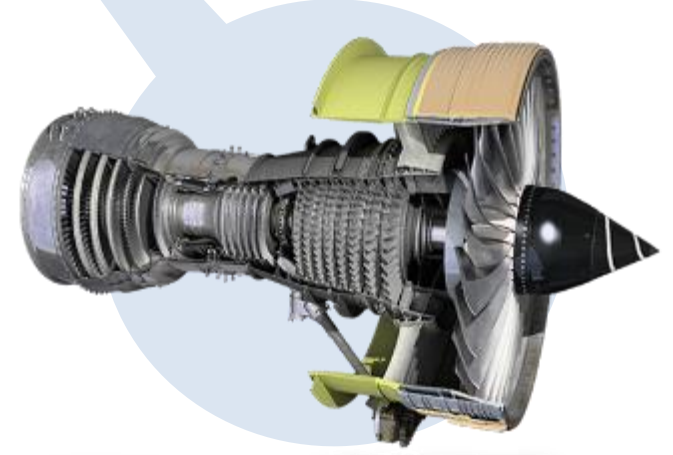


Electrical Flight Control
System Computers
Enclosure

引擎零組件



JINPAO produce sheet metal parts for airplane engine

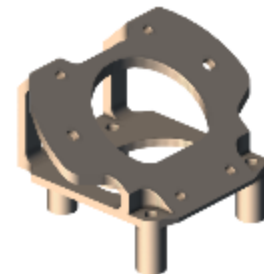
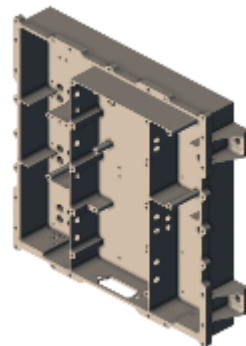
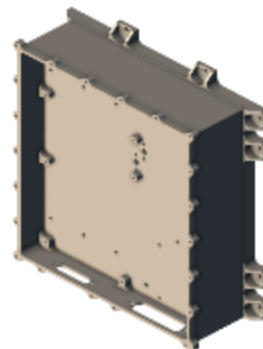
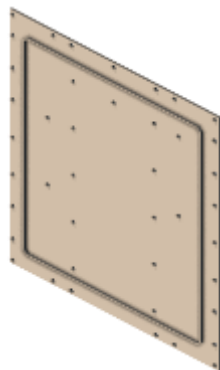
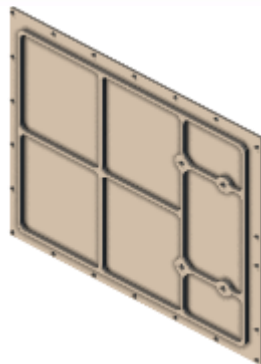


Trent-700 (Rolls-Royce)

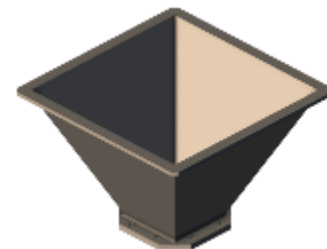
Airbus 衛星零組件



THEOS-2



Star Tracker
Interface Bracket
(Titanium)



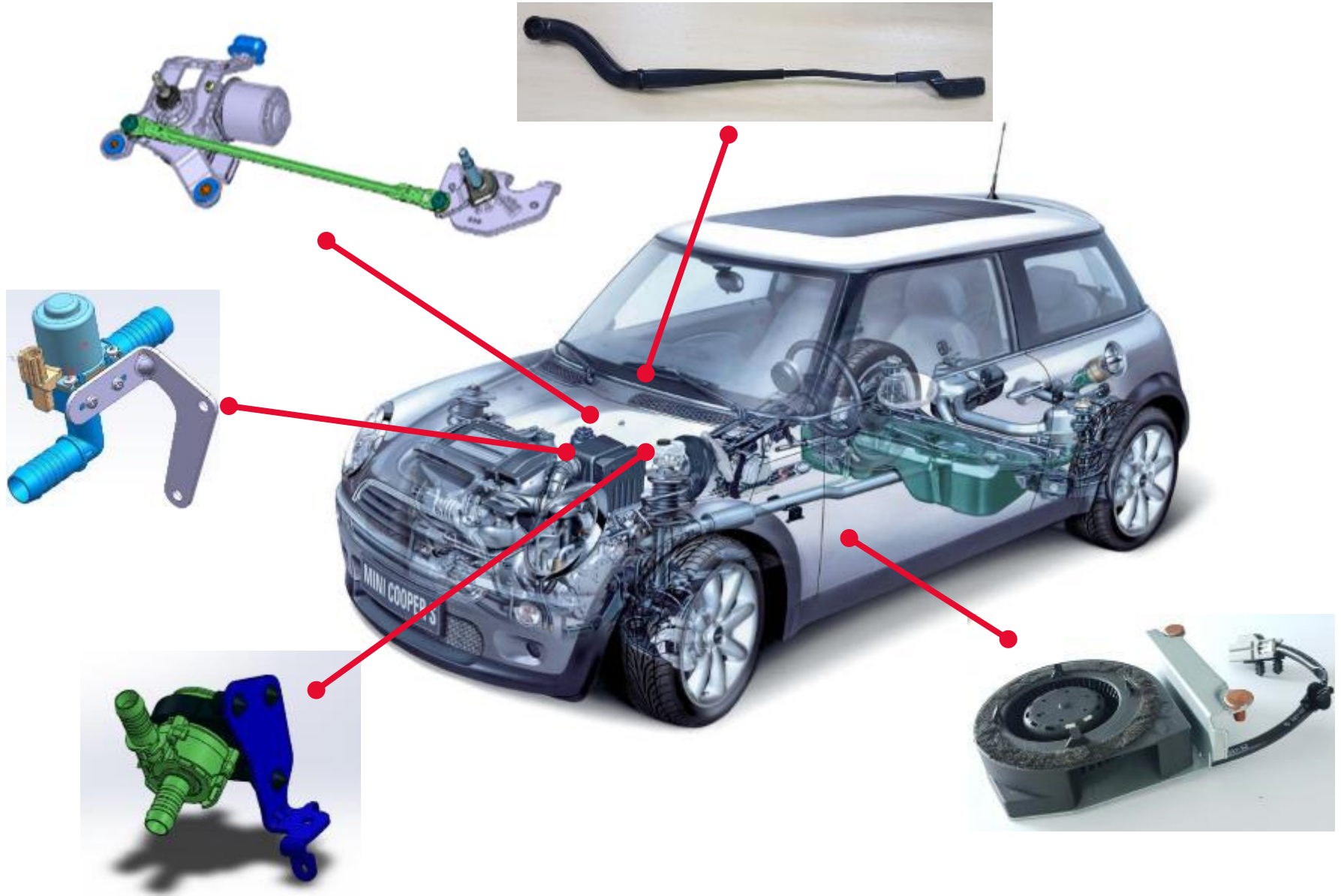
X-Band Horn
Antenna (Aluminum)





其它類產品

其他-車用零組件

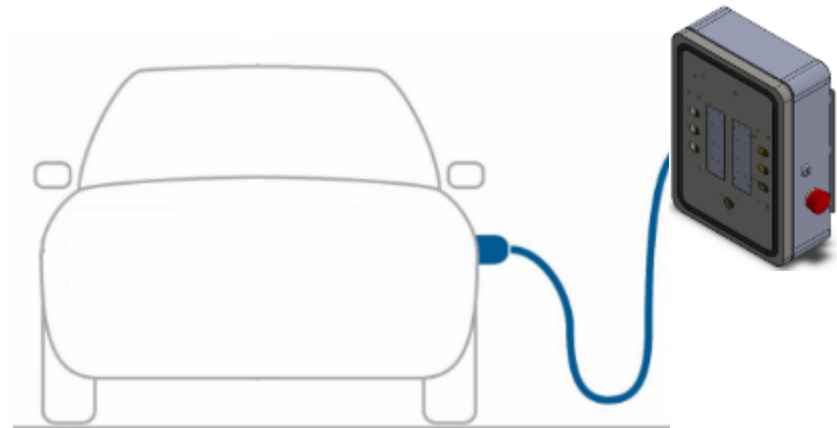
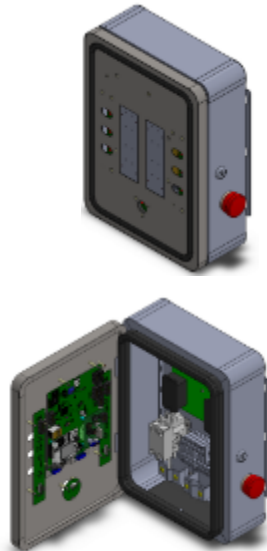


其他-電動車充電站



Mini Changer

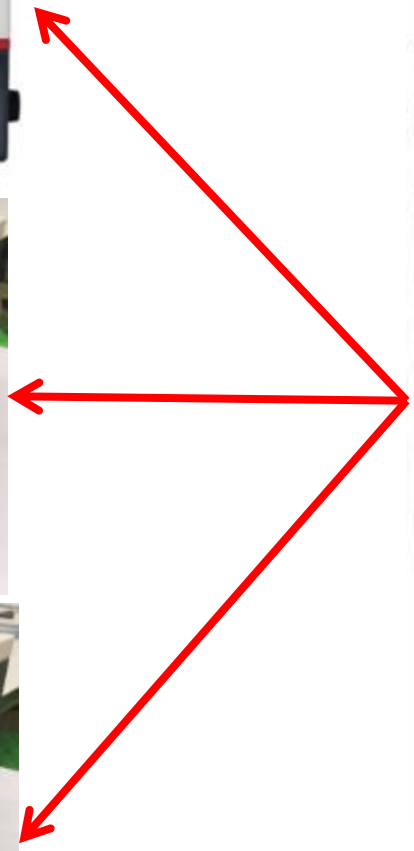
- Wall Type 15A.
- Wall Type 32A.



其他-捷運售票機



其他-內視鏡影像處理器



Food Industry Products



X-ray Metal Checker



Automatic Combination Weighers

其他-加油站付費系統



其他-加油站付費系統



經營績效



財務報表

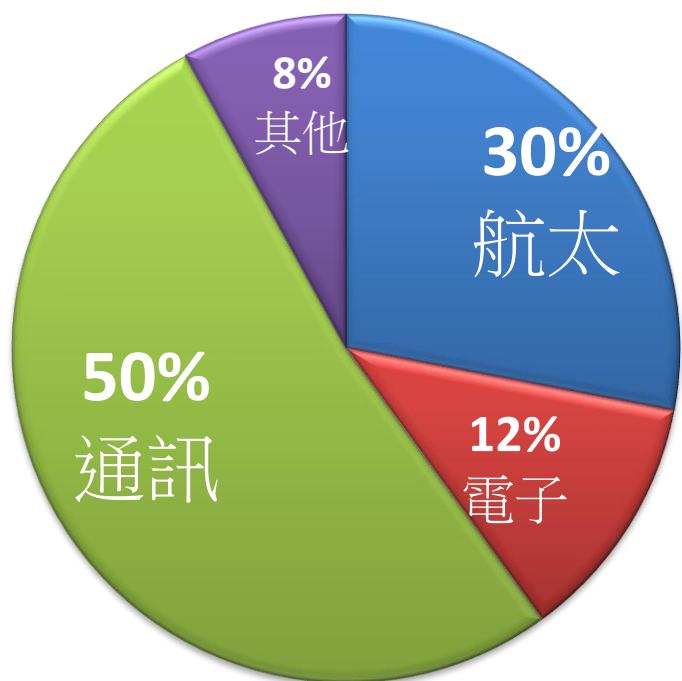
(經實開曼/單位新台幣：仟元)

	2019	2020	2021	2022	2022Q1~Q3	2023Q1~Q3
損益表						
營業收入	1,437,581	1,259,442	1,350,982	1,789,193	1,270,244	1,765,747
營業成本	991,453	861,414	903,370	1,141,191	833,987	1,033,209
營業、管銷及研發費用	310,478	284,188	282,525	325,578	219,715	314,505
營業利益	135,650	113,840	165,087	322,424	216,542	418,033
稅前利益	105,322	128,452	168,760	304,884	222,888	435,055
本期淨利	90,678	117,284	124,736	243,180	176,199	393,857
EPS (新台幣元/每股) 基本	2.31	2.65	3.00	5.45	4.03	8.27
資產負債表						
流動資產	1,344,157	1,103,539	1,072,381	1,469,206	1,421,720	1,960,962
非流動資產	1,975,519	2,141,340	1,856,006	2,108,185	1,987,928	2,230,637
資產總計	3,319,676	3,244,879	2,928,387	3,577,391	3,409,648	4,191,599
流動負債	927,150	769,089	1,007,656	1,171,472	1,247,787	1,381,616
非流動負債	494,613	628,175	264,009	321,850	330,116	501,447
股東權益合計	1,878,426	1,817,074	1,635,125	2,084,069	1,831,745	2,308,536
負債及股東權益總計	3,319,676	3,244,879	2,928,387	3,577,391	3,409,648	4,191,599
財務比率						
毛利率 (%)	31.03%	31.6%	33.13%	36.22%	34.34%	41.49%
營業利益 (%)	9.44%	9.04%	12.22%	18.02%	17.04%	23.67%
淨利率 (%)	6.36%	9.31%	9.23%	13.59%	13.87%	22.31%
股東權益報酬率 ROE (%)	5.26%	6.35%	7.12%	11.67%	9.62%	17.06%
負債占資產比率 (%)	42.83%	43.06%	43.43%	41.74%	46.28%	44.92%

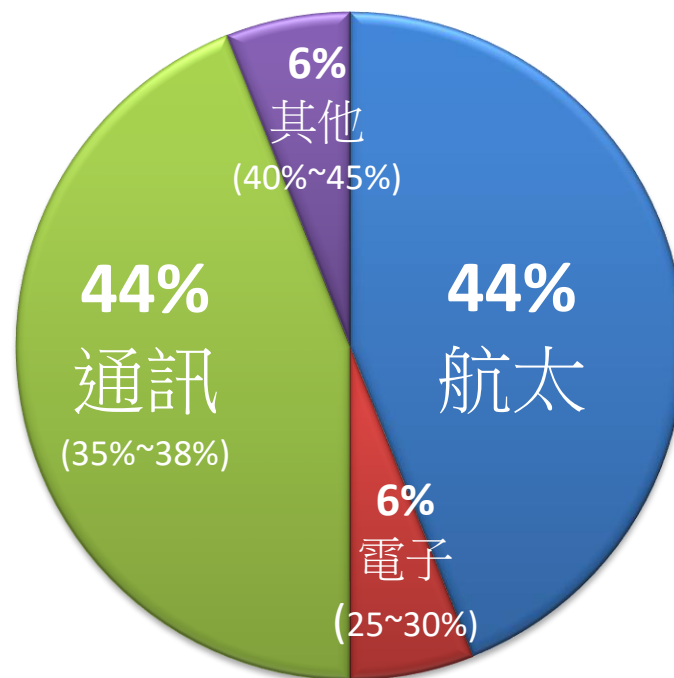
資料來源：損益表與資產負債表經會計師查核簽證，財務比率為公司自結。

營收分布

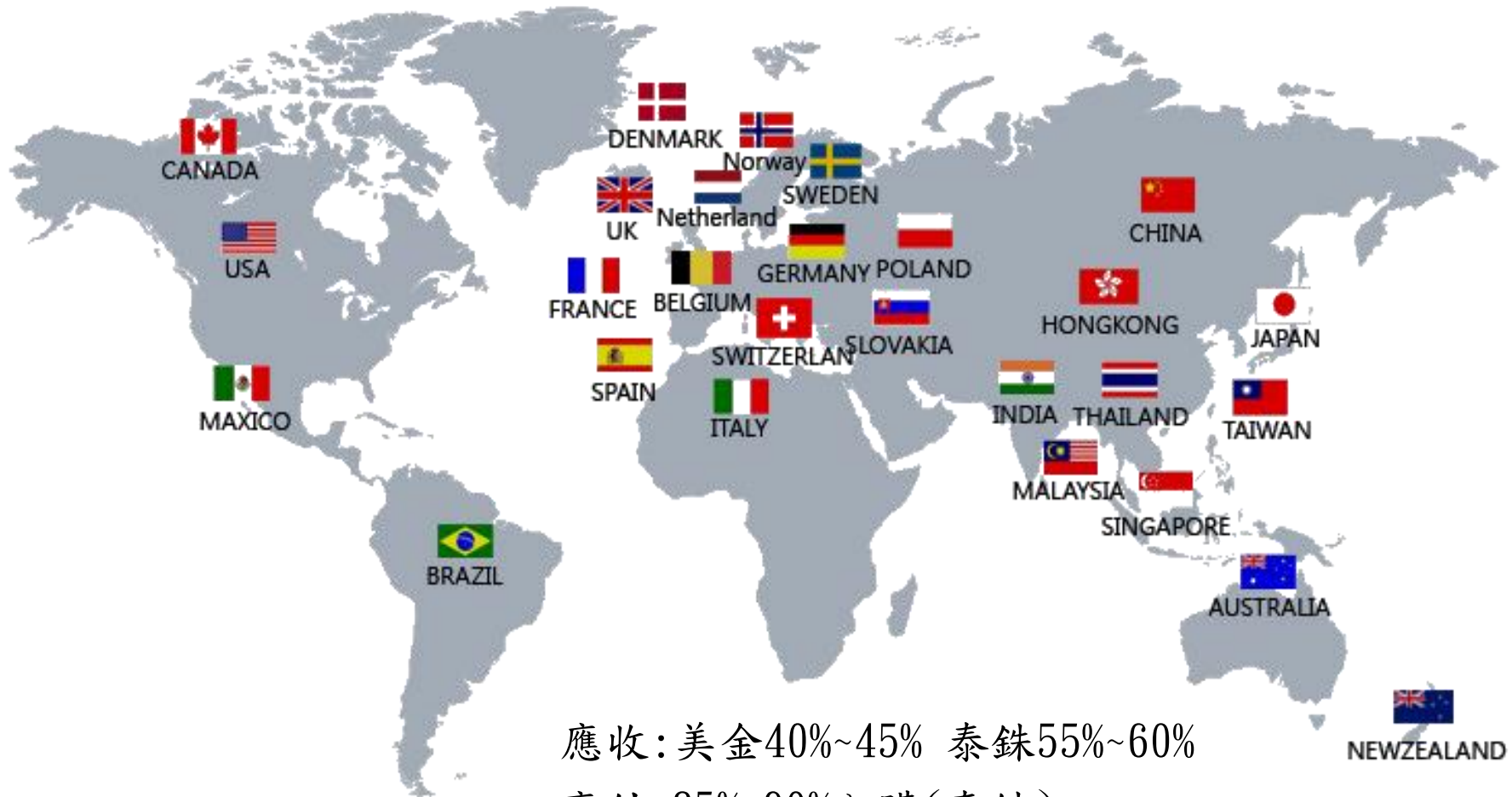
2022全年



2023Q1~Q3



客戶分布

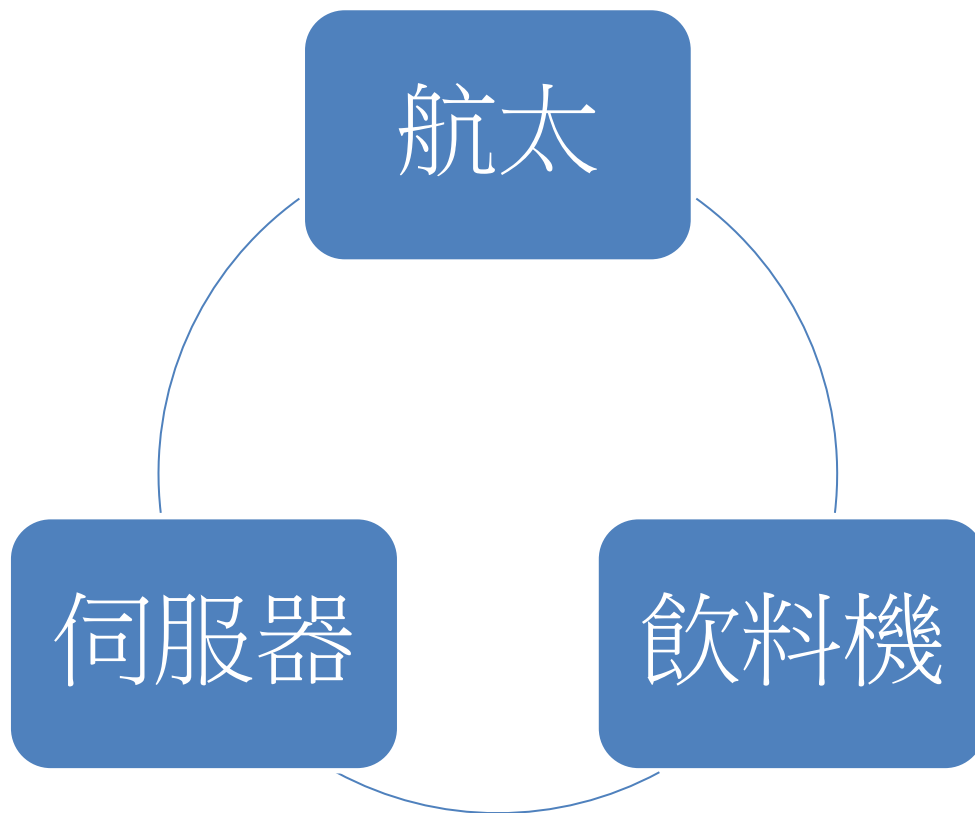


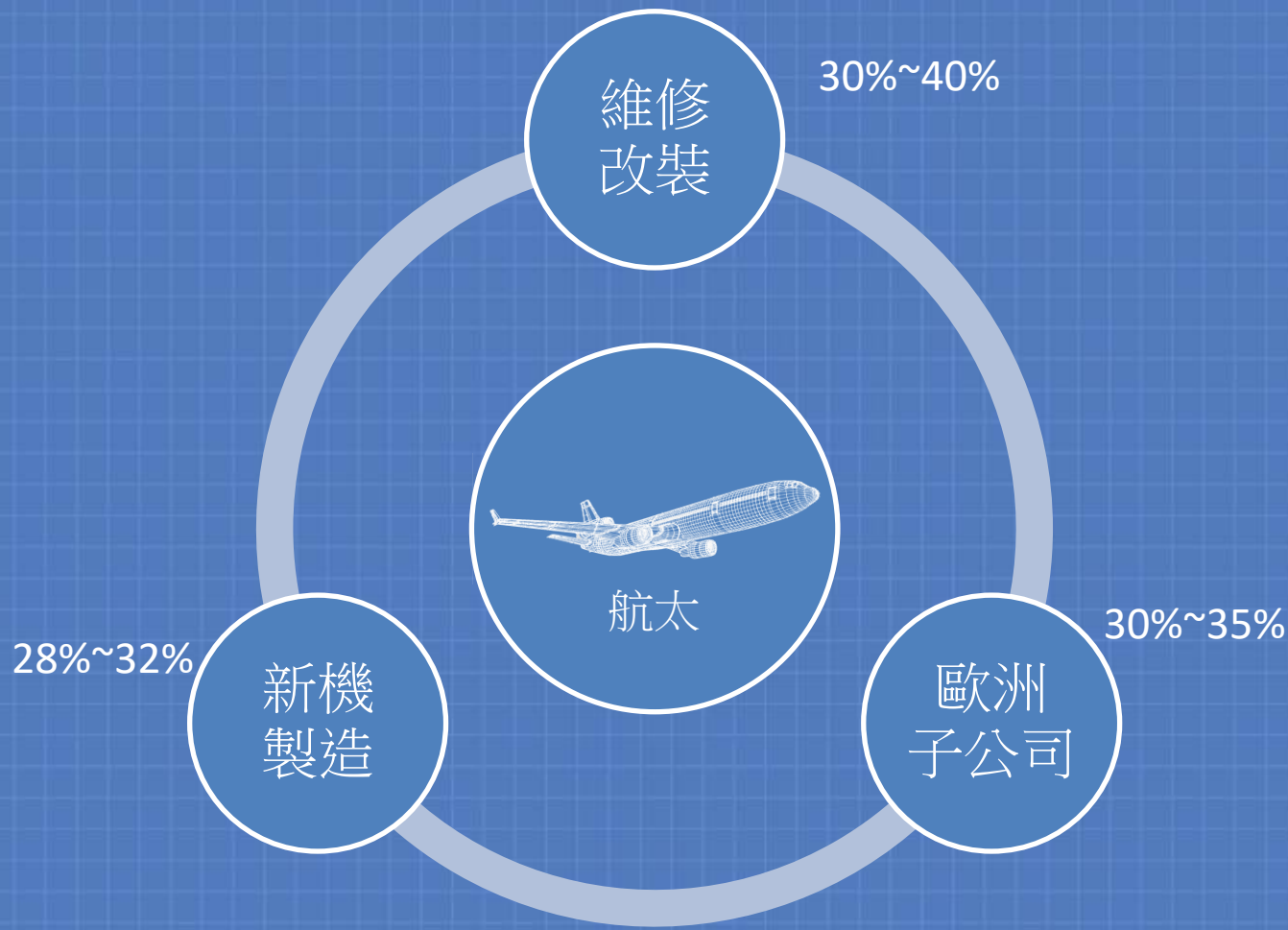
應收：美金40%~45% 泰銖55%~60%
應付：85%~90%內購(泰銖)



未來展望

2024年3大主軸



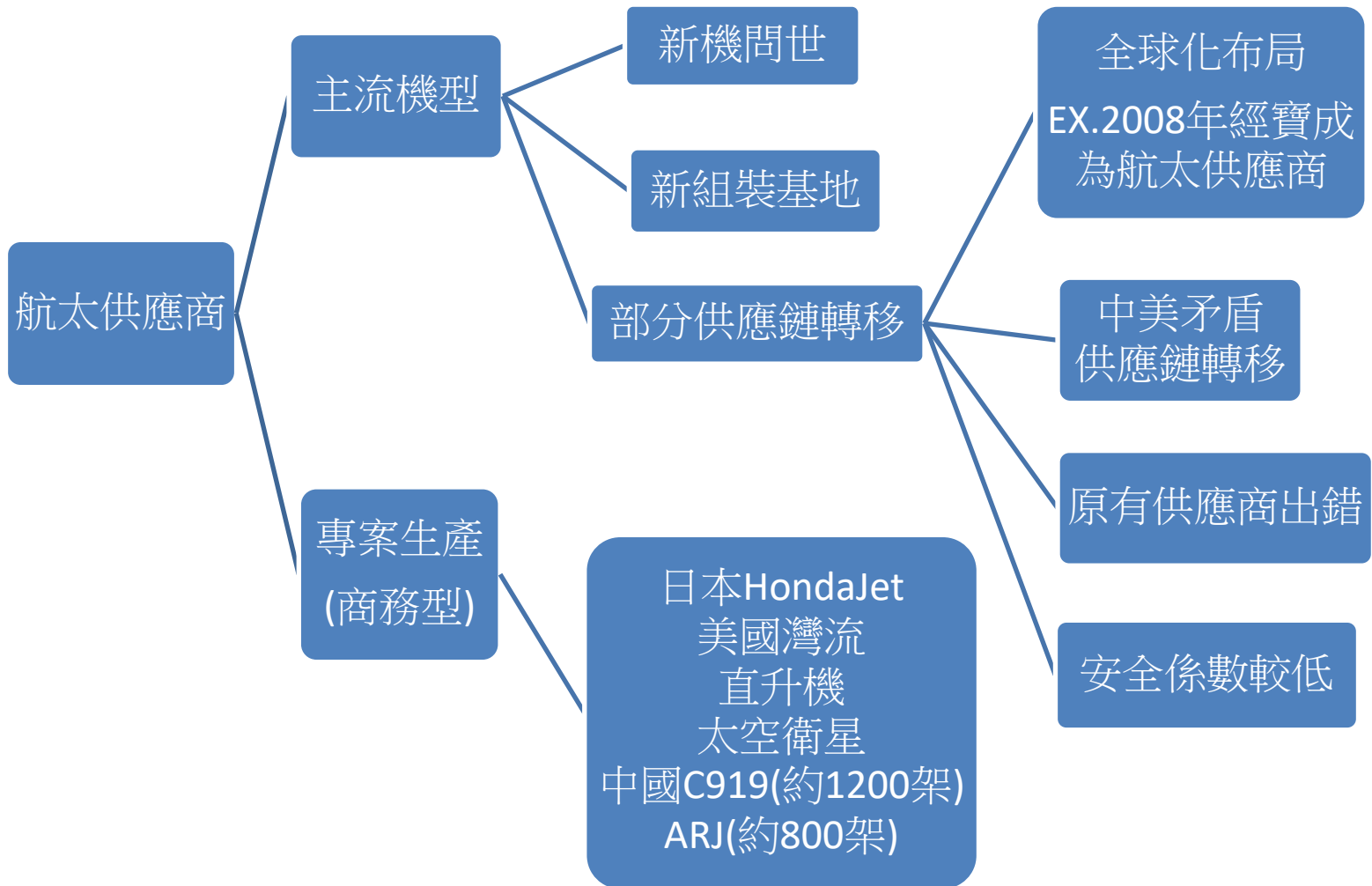


2022-2023 • JINPAO © • Thailand

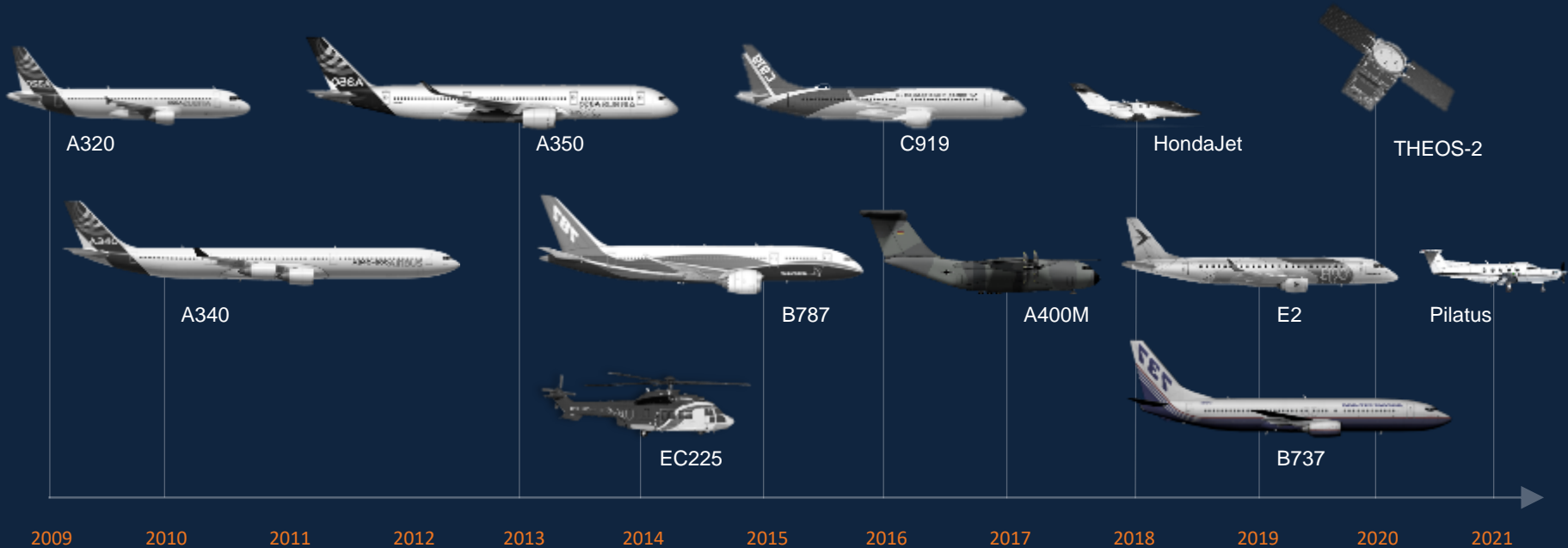
JINPAO Precision Industry

Aerospace and Defense projects

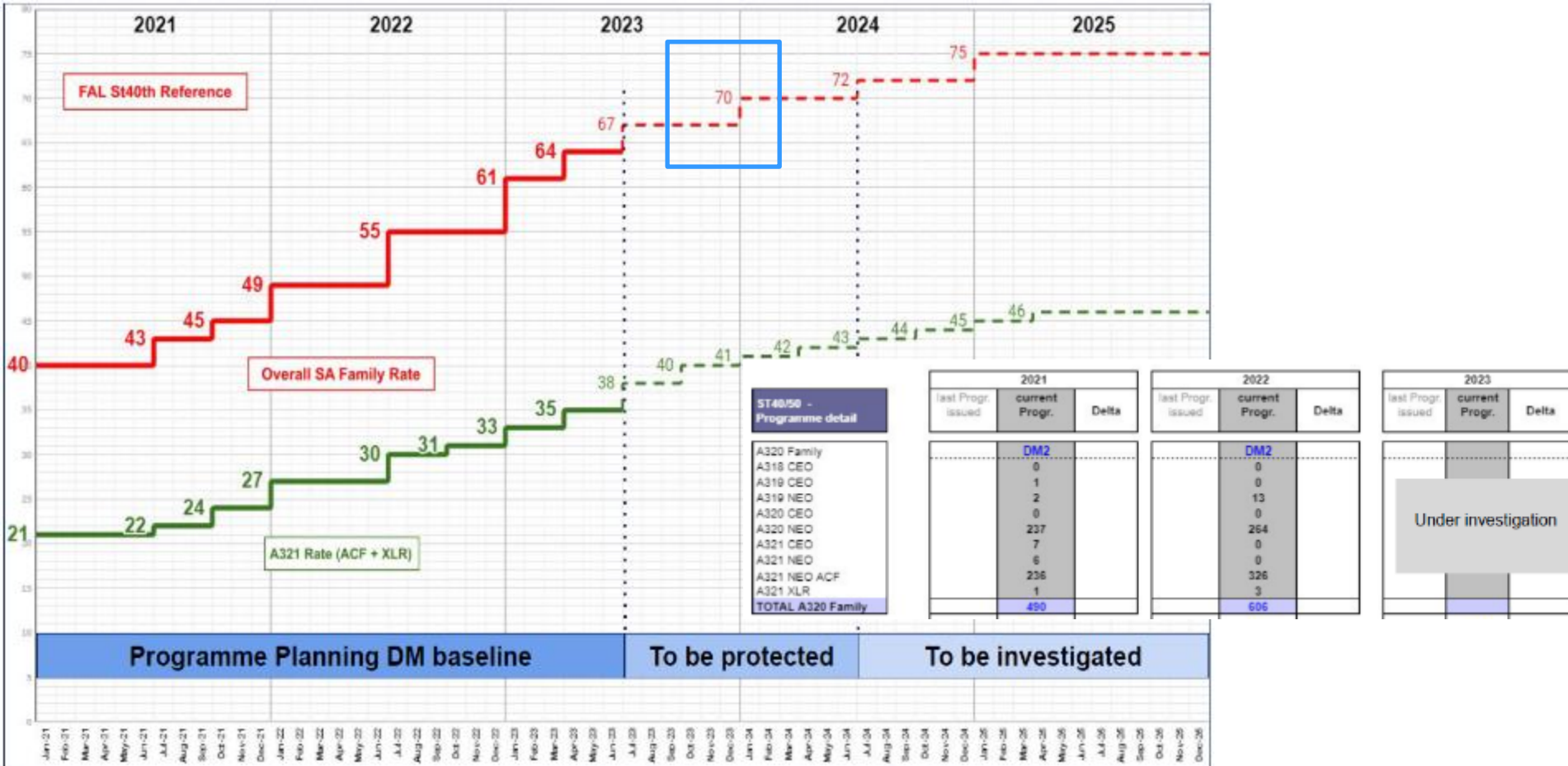
新機製造



Diversified Aerospace Programs (Portfolio)



新機製造-客戶生產計畫

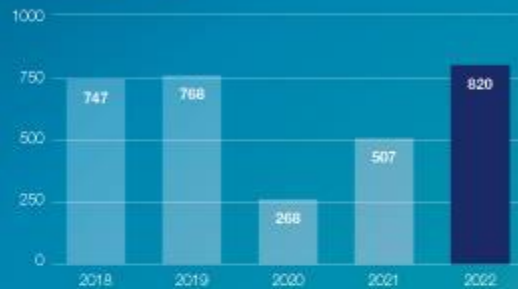


新機製造 - 去年交機數及在手訂單

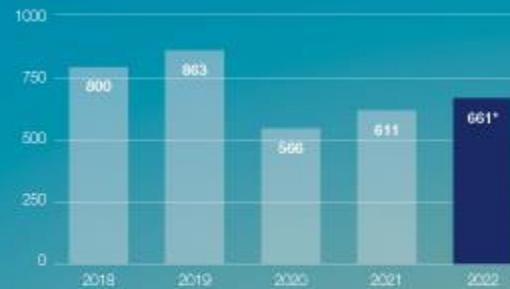
Airbus - 2022 Commercial Aircraft highlights

Rebounding orders & deliveries, solid backlog in a complex environment

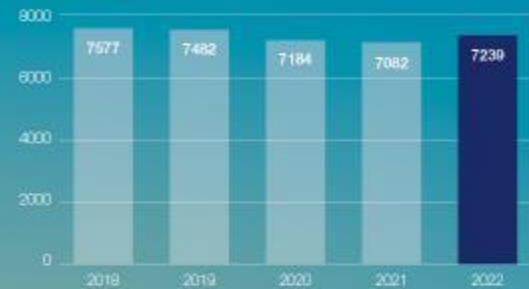
Orders (net)



Deliveries

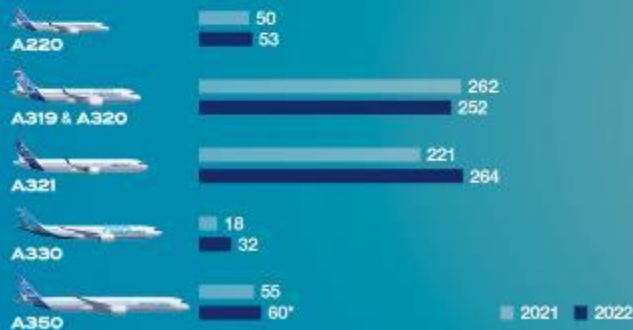


Backlog



Deliveries per programme

Eight percent increase in total



Deliveries per region Strong global footing



*After a reduction of two aircraft (2 A350-900 AIRCRAFT) previously recorded as sold in December 2021 for which a transfer was not possible due to international sanctions against Russia.

新機製造-目前交機數及在手訂單

- **October 2023 deliveries:** 71 to 42 customers.
 - **October 2023 gross orders:** 119.
 - **October deliveries to date:** 559 to 81 customers.
- A320 family 60架
A330 3架
A350 8架

	Single-Aisle	A300/A310	A330	A340	A350	A380	TOTAL
Total Orders	18726	816	1809	377	1056	251	23035
Total Deliveries	11430	816	1582	377	565	251	15021
Aircraft in Operation	10718	264	1466	202	565	232	13447

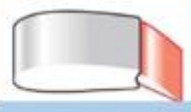
新機製造-航太目標產品



Structural Sheet metal
Parts



Winglets



Flaps,
Spoilers,
Ailerons



Fuselage
elements



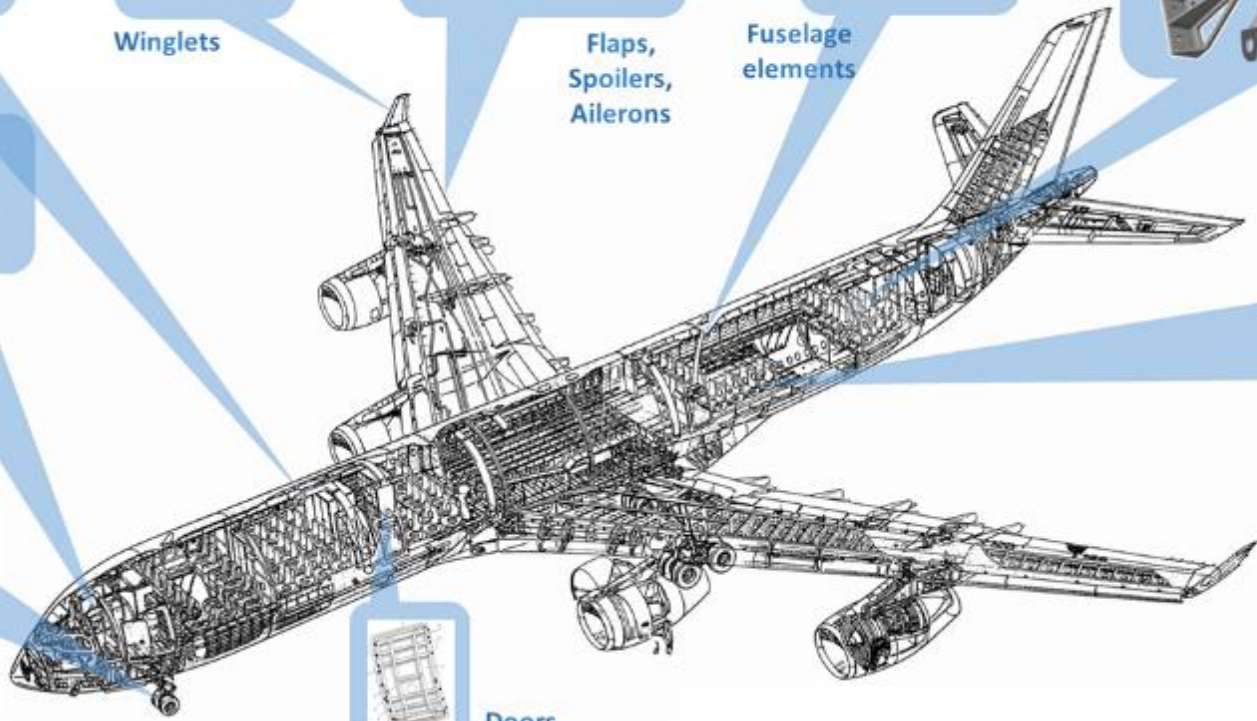
Brackets,
Structural Parts
and Assemblies



Sheet metal Parts
for consoles



Main Landing Gear Kits
and Assemblies

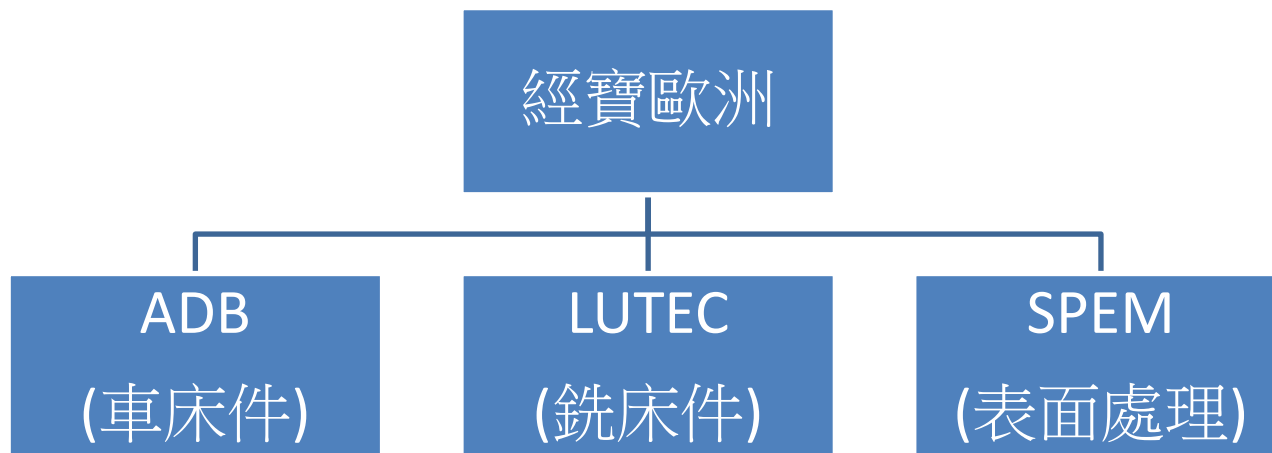


Doors



Seats

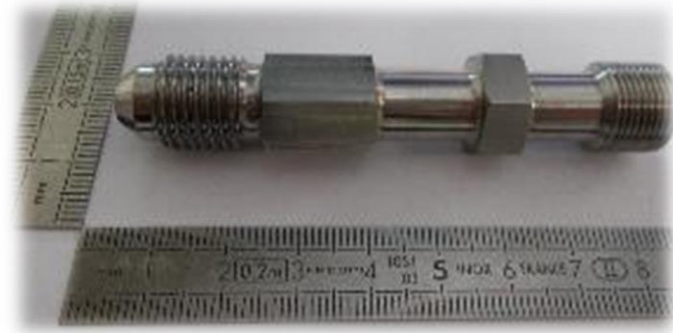
AGILITEAM BY JINPAO



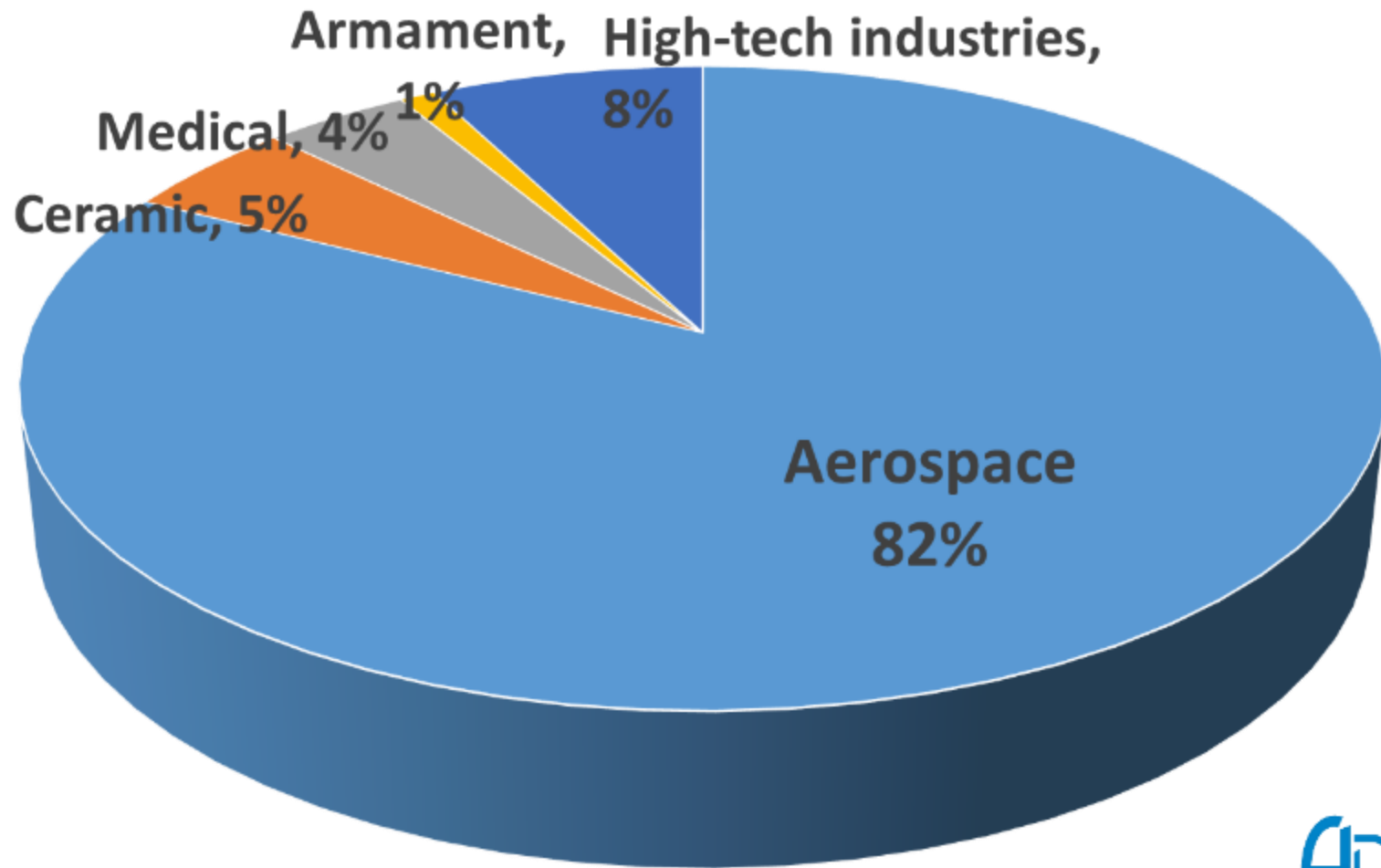
ADB PRODUCTION



- Aluminum
- Stainless steel
- Treated steels
- Inconel's Alloys
- Titanium
- Plastics
- Brasses
- Bronzes
- Cuivreu



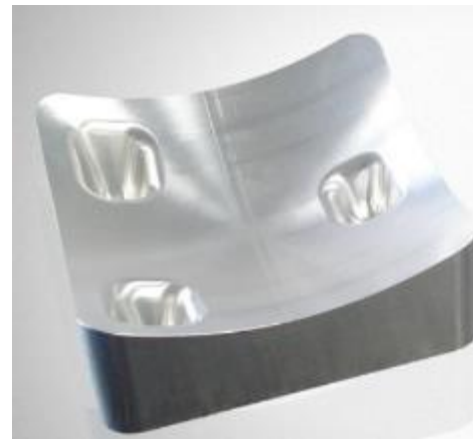
ADB SALES REVENUE



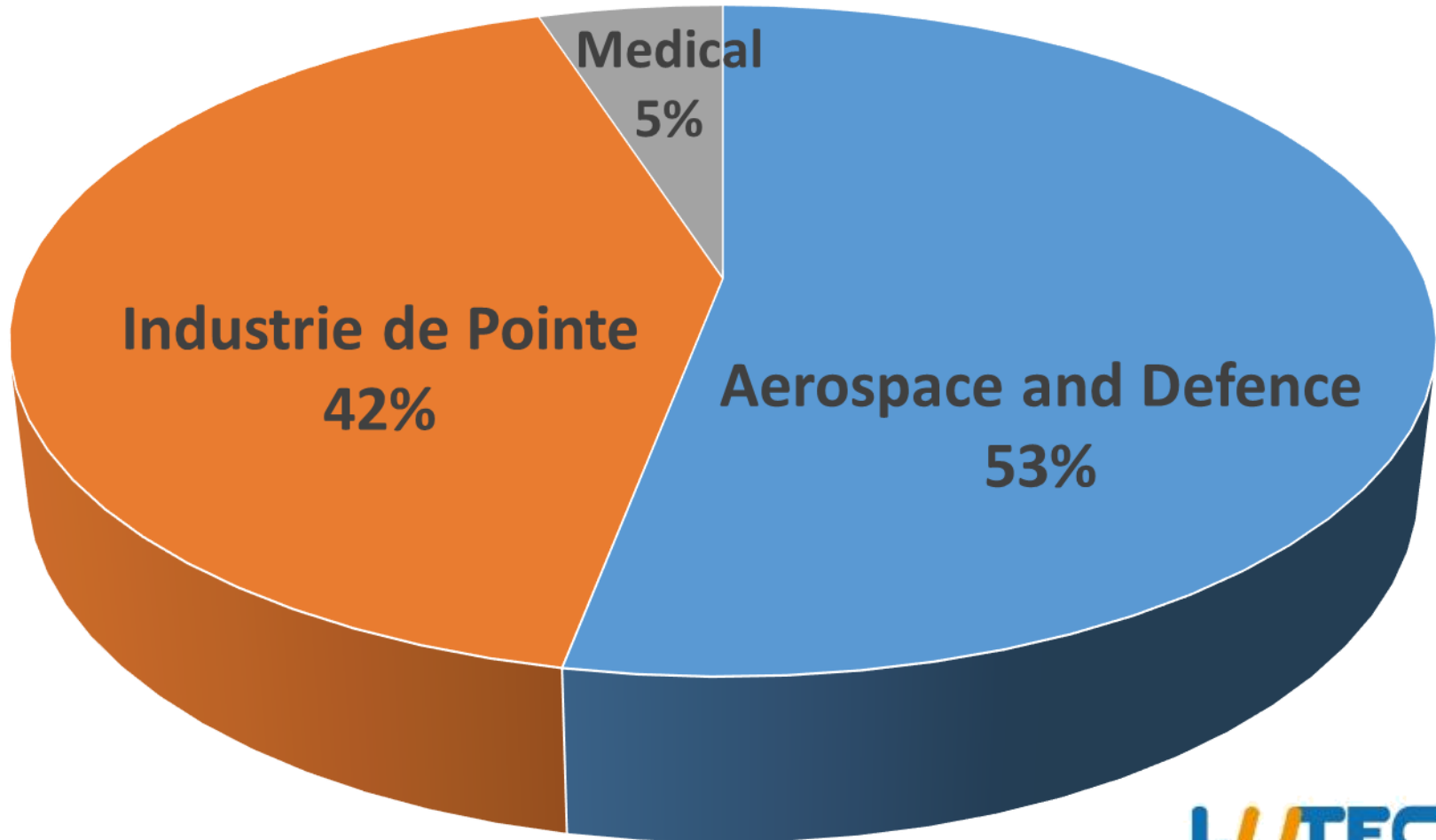
LUTEC PRODUCTION



- Aluminum
- Stainless steel
- Treated steels
- Titanium
- Plastics
- Inconel's Alloys
- Fonts
- Copper



LUTEC SALES REVENUE



維修改裝件

Maintenance, Repair, Operations

機隊
成長

- 及時、定期維護

機齡
增加

- 內部裝潢ex. 椅子、娛樂系統、廁所
- 改裝貨機
- 退役後拆解、回收、後續處理

Mordor Intelligence 預估 2023~2028 商用飛機 MRO市場將從742億美元規模成長至941億美元，複合年均成長率4.88%

維修改裝件



2019

- 成立wefly
- 引進EASA
- 課程輔導
- 產業合作

2022

- 取得航太製程認證
- 新客戶試產跨入維修改裝件

2025

- 拓展產能
- 取得維修零組件廠認證
- 新客戶合作

EASA CERTIFIED DOMAIN

wefly
INTERNATIONAL TRAINING ACADEMY

JINP40
Precision Industry Co., Ltd.

Wefly is an international aviation training academy. A Thai-Italian cooperation program, partnered with EASA Certified Organisations.

- EASA Part-147
- EASA Part-145, CAMO
- EASA DOA, POA
- EASA ATO

- EASA Part-145
 - Part-145 Approval is a company level certification to the European Commission Regulation standards of design, production, Maintenance, Repair and Overhaul of aircraft (MRO).
- EASA Part-147
 - Part-147 is the certified EASA training organization that regulates the approval of maintenance training organisations.
- EASA ATO
 - An ATO is an Approved Training Organisation. They are approved to deliver flight & maintenance training.

- EASA CAMO
 - Continuing airworthiness management organisation (CAMO) is a civil aviation organisation authorized to schedule and control continuing airworthiness activities on aircraft and their parts.
- EASA DOA
 - DOA is a design organisation (approval) responsible for the design of aircraft, related parts and appliances, and for changes or repairs. design approvals.
- EASA POA
 - POA is a production organisation approval.





TRAINING COURSES

Aircraft Maintenance Engineer

Basic Training Courses
 Skilled Engineer Course
 Module & Examination Packages
 Type Training
 Specialised Training Courses

Pilot

Pilot Licence Conversion
 Type Rate Training

WEFLY PARTNERS

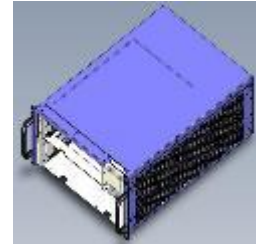
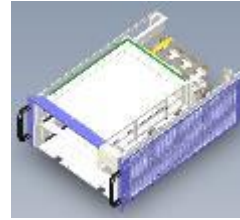
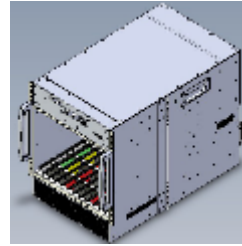
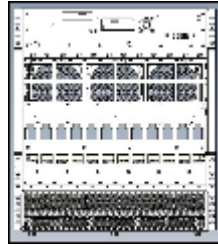
Wefly has a wide range of partners operating in the EASA certified domain and in the worldwide aviation industry.



Wefly 認證學校



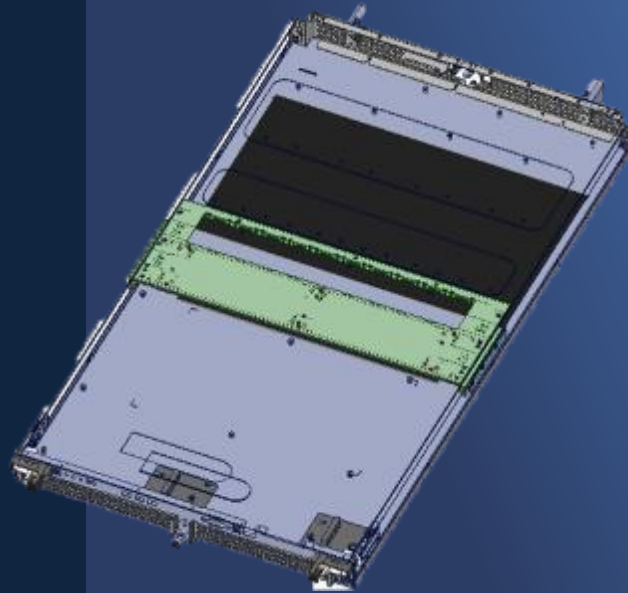
機殼



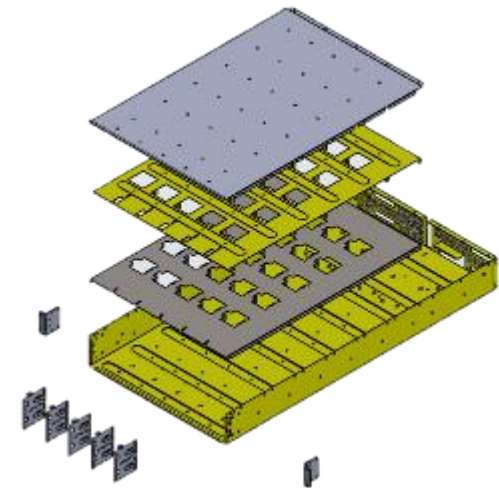
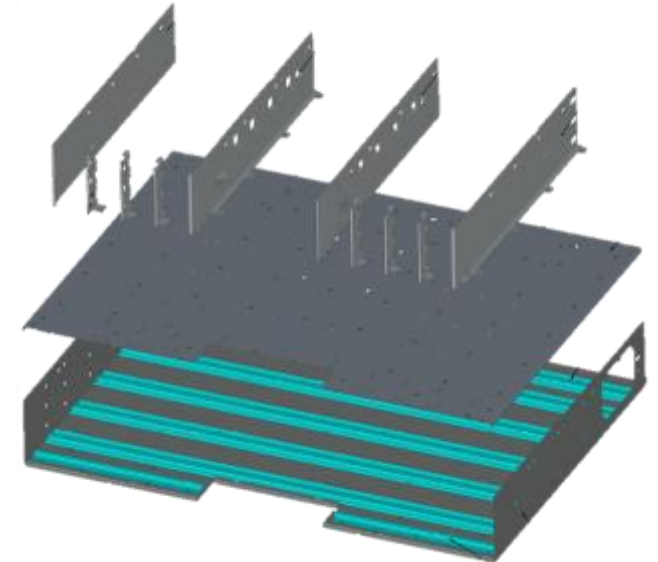
機櫃



Data Center - Server



1U 3 Model



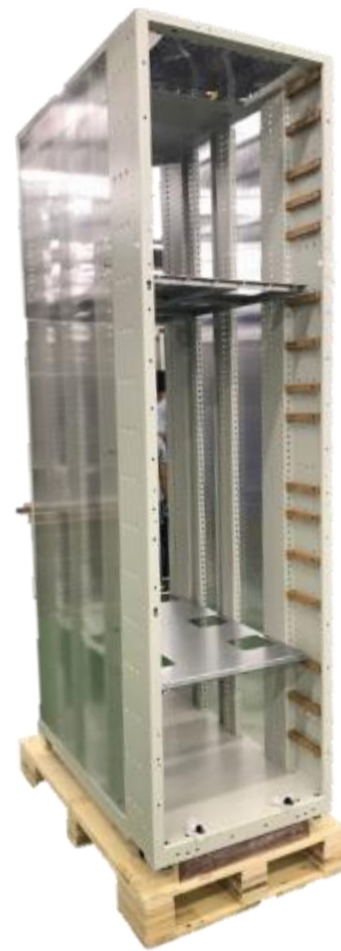
Data Center

-Rack

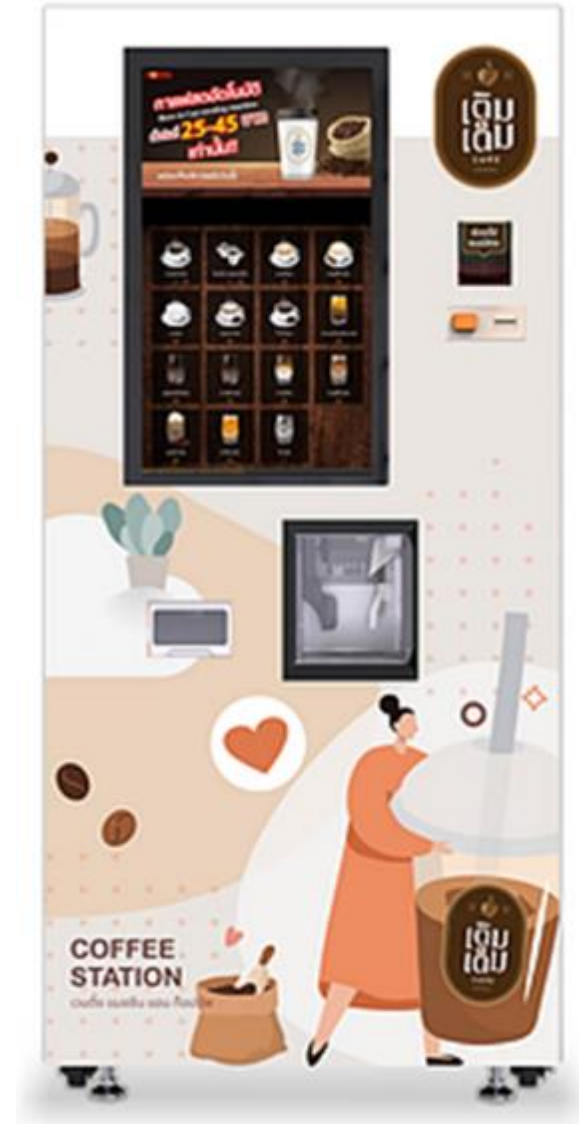
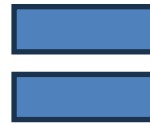
42U


48U

48U Open Rack



數位咖啡機





Thank you
Q&A